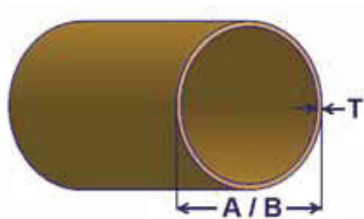


# Red Brass Pipe



## Red Brass Pipe

Weights & Dimensions ASTM B43 Tolerance Apply

A Nominal Pipe Size	B Actual Outside Diameter	T Actual Wall Thickness Standard	Pounds per Foot Standard	T Actual Wall Thickness Extra Strong	Pounds per Foot Extra Strong
1/8	0.405	0.062	0.2533	0.100	0.363
1/4	0.540	0.082	0.4474	0.123	0.611
3/8	0.675	0.090	0.6272	0.127	0.829
1/2	0.840	0.107	0.9344	0.149	1.23
3/4	1.050	0.114	1.2712	0.157	1.67
1	1.315	0.126	1.7848	0.182	2.46
1 1/4	1.660	0.146	2.6333	0.194	3.39
1 1/2	1.900	0.150	3.1273	0.203	4.10
2	2.375	0.156	4.1234	0.221	5.67
2 1/2	2.875	0.187	5.9900	0.280	8.66
3	3.500	0.219	8.5600	0.304	11.6
4	4.500	0.250	12.700	0.341	16.9
5	5.562	0.250	15.8	0.375	23.2
6	6.625	0.250	19.0	0.437	32.2

## Red Brass Pipe

ASC Engineered Solutions is one of the largest importers of Red Brass pipe and carries one of the largest inventories; hundreds of thousands of pounds are in stock! (There are no domestic (US) producers of Red Brass pipe, except re-draw mills and one mill that makes only 4" and larger diameter pipe.)

All pipe are carefully quality checked. Dimensional accuracy is checked by the Quality Control Department of Trenton on every batch/bundle of pipe. All Brass pipe has been tested for chemical composition and physical/mechanical characteristics and test results filed for future reference. Compliance Certifications, as well as Full Physical / Mechanical and Chemical Certifications, are available.

## Standards

All Red Brass pipe, also known as "Alloy 230," is made to the exacting standards of ASTM B-43.

## Sizes stocked

1/8" through 6" nominal diameters in Regular / Schedule 40 1/8" through 4" nominal diameters in Extra Strong / Schedule 80.

## Tempers stocked

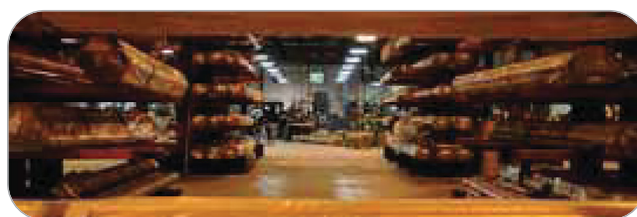
Two common tempers are H-58 / General Purpose Hard Drawn (most common) and O-61 / Annealed. All are stocked in H-58 General Purpose Drawn Temper. All Regular / Schedule 40 and most Extra Strong / Schedule 80 are also stocked in O-61, Annealed Temper.

## Finishes available

Plain AND Chrome Plated (any length to 6 ft; with or without threaded ends). Also available as a special order; nickel and brushed nickel finishes size limitations apply.

## Lengths

Red Brass pipe is stocked in 12 ft mill lengths; other lengths are available. Full lengths of pipe can be cut to enable it to be shipped by UPS (may save considerable moneys over truck shipments of small quantities).



# Yellow Brass Pipe

## Yellow Brass Pipe

Trenton carries a sizable inventory of  $\frac{3}{8}$ " and  $\frac{1}{2}$ " Regular / Schedule 40 alloy 260 (C26000) Yellow Brass pipe. Much of this pipe is used to make chrome plated.

## Standards

All Yellow Brass pipe, also known as "Alloy 260," is made to the exacting standards of ASTM B-135.

## Sizes stocked

$\frac{3}{8}$ " and  $\frac{1}{2}$ " nominal diameters in Regular / Schedule 40 other sizes available on request.

## Temper stocked

Two common tempers are H-58/ Hard (most common) and O-61 / Annealed. All are stocked in H-58, General Purpose Drawn Temper.

## Finishes available

Plain AND Chrome Plated (any length to 6 ft; with or without threaded ends).

## Lengths

Red Brass pipe is stocked in 12 ft mill lengths; other lengths are available.



asc-es.com

Building connections that last™