

TITAN FLOW CONTROL, INC.

Specialty Products & Check Valves



**Foot Valve
FV 50-DI**

Class 150
Flanged
Ductile Iron
Sizes: 2 ~ 12"



Cast Tee Strainer

Titan now has Cast Tee strainers!
Carbon and Stainless Steel,
ASME class 150
Raised face Flanged.
Size 2" to 24"



NEW

Foot Valves

Check Valve Models
CV 80-SS and CV 20-BZ can also
be designed as Foot Valves

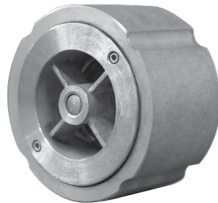
Center Guided



CV 90-DI

Class 150/300
Wafer Type - Silent
Ductile Iron
Sizes: 2 ~ 12"

Available with
soft and metal
seats



CV 91-SS

Class 150/300
Wafer Type - Silent
Stainless Steel
Sizes: 2 ~ 12"

Available with
soft and metal
seats



CV 50-DI

Class 150
Flanged - Globe Style
Ductile Iron
Sizes: 2 ~ 36"

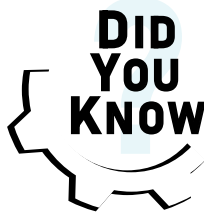
Available with
soft and metal
seats



CV 51-CS / CV 51-SS

Class 150
Flanged - Globe Style
Carbon & Stainless Steel
Sizes: 2 ~ 36"

Available with
soft and metal
seats



**DID
YOU
KNOW**

A Properly
Sized Check
Valve Is The
Best Defense
Against Water
Hammer.



**CV 52-DI
CV 52-CS / CV 52-SS**

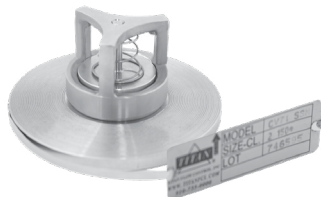
Class 300
Flanged - Globe Style
Ductile Iron, Carbon & Stainless
Sizes: 2 ~ 36"

Available with
soft and metal
seats



CV 80-SS

Class 300
Threaded / In-Line
Stainless Steel
Sizes: $\frac{3}{8}$ ~ 3"



CV 71-SS

Class 150/300
Wafer - Insert Check Valve
Stainless Steel
Sizes: $\frac{1}{2}$ ~ 6"



**CV 88T-SS
CV 88S-SS**

Class 300
Threaded / Socket Weld
Stainless Steel
Sizes: $\frac{1}{2}$ ~ 3"



CV 20-BR

400 WOG
Threaded / In-Line
Brass
Sizes: $\frac{1}{4}$ ~ 2"

TITAN FLOW CONTROL, INC.

Check Valves

Single & Dual Disc



CV 12-CS / CV 12-SS
Class 150
Short Pattern - Wafer Type
Carbon & Stainless Steel
Sizes: 2 ~ 24"



CV 31-DI
Class 150
Wafer - Swing Type
Ductile Iron
Sizes: 2 ~ 12"



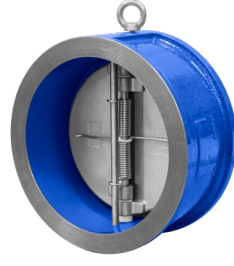
CV 32-CS / CV 32-SS
Class 150
Wafer - Swing Type
Carbon & Stainless Steel
Sizes: 2 ~ 12"



CV 34-CS / CV 34-SS
Class 300
Wafer - Swing Type
Carbon & Stainless Steel
Sizes: 2 ~ 12"



CV 41-DI
Class 150
Wafer - Dual Disc
Ductile Iron
Sizes: 2 ~ 48"



CV 41A-DI
Class 150
Wafer - Dual Disc
Ductile Iron
Sizes: 2 ~ 48"



CV 42-CS / CV 42-SS
Class 150/300
Wafer - Dual Disc
Carbon & Stainless Steel
Sizes: 2 ~ 48"



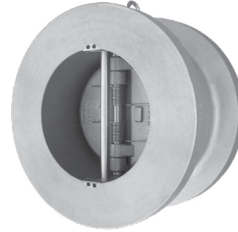
CV 42L-CS / CV 42L-SS
Class 150
Wafer - Dual Disc
Ductile Iron
Sizes: 2 ~ 48"



CV 44-CS / CV 44-SS
Class 300
Wafer - Dual Disc
Carbon & Stainless Steel
Sizes: 2 ~ 48"



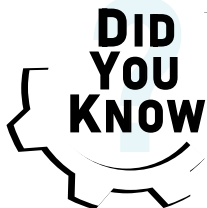
CV 46-CS / CV 46-SS
Class 600
Wafer - Dual Disc
Carbon & Stainless Steel
Sizes: 2 ~ 48"



CV 47-CS / CV 47-SS
Class 900
Wafer - Dual Disc
Carbon Steel & Stainless Steel
Sizes: 2 ~ 48"



CV 31F-CI / CV 31WF-CI
Class 125
Wafer - Dual Disc
Ductile Iron
Sizes: 2 ~ 12"



Titan Check Valves Are Designed With Features To Minimize Head Loss:

- Large Cross Sectional Area
- Specially Contoured Bodies
- Short, Straight Flow Paths
- Compression Springs
- Low Cracking Pressure

All Titan Check Valves Meet Or Exceed API 598 Valve Inspection & Testing Standards

TITAN FLOW CONTROL, INC.

Fire - Line Products

Ductile Iron



CV 31G-UL-DI
WOG 300
Wafer - Swing Type
Ductile Iron
Sizes: 2 ~ 12"



BF 77G-UL-DI
WOG 300
Grooved End - BFV
Ductile Iron
Sizes: 2 ~ 12"



YS 58G-UL-DI
WOG 300
Grooved End - "Y" Type
Ductile Iron
Sizes: 2 ~ 12"

Fire Protection



YS 58U-DI
Class 150
Flanged
Sizes: 2 ~ 12"

Titan Fire - line Product Features:

- AWWA C606 Grooved and Shouldered Joints
- Sizes 2" through 12" in Stock
- Rated for 300 WOG
- Ductile Iron body material
- EPDM seats and O-rings
- Grooved End design allow for quick and easy Installation
- Approved and listed as required in NFPA Standards
- Following Standards are referenced in design:
 - UL Subject 321 Pipeline Strainers
 - ULC / ORD-C 321 Pipeline Strainers (Canda)
 - NSF/ANSI 61 Drinking water system components - Health effects
 - NSF/ANSI 372 Drinking water system components - lead effects
 - ANSI/CAN/UL/ULC 312 Check Valves for Fire protection
 - ANSI/CAN/UL/ULC 1091 Butterfly valves for Fire protection
 - ASME B16.41 Ductile Iron Pipe Flanges and Flanged Fittings
 - MSS SP-67, MSS SP-67 Type II Valve design and testing
 - MSS SP-55 Quality standard for valve castings
 - MSS SP-25 Standard Marking system for Valves
 - API 598 Valve inspection and Testing