

"Y" Type Strainers

Lead Free*

Mueller Steam Specialty supplies customers world-wide with all of their requirements for "Y" Strainers. Whether the need is for a simple low pressure cast iron threaded strainer or a large, high pressure special alloy unit with a custom cap design, we have the "Y" strainers that fit the application.

We maintain a large stock of both standard and special sizes and materials. This stock includes end connections of threaded, flanged, socket weld, butt weld, solder, silbrazed and grooved ends. We also have units with screwed caps, bolted caps, hinge type covers and swing type clamp covers.

Pressure is not a problem for Mueller Steam Specialty. "Y" strainers are available for pressures from ANSI Class 125 through Class 2500 and higher.

All of these strainers are available in a wide variety of materials. Units are maintained in stock with standard materials such as:

- Cast Iron
- 316 SS
- Monel
- Bronze
- 304 SS
- Ductile Iron
- 316L SS
- Hastelloy
- Carbon Steel
- Alloy 20

Model 11M

Class 250

Cast Iron - NPT Ends, Screwed Cap

- Size: ¼" - 4" (8 - 100mm)
- 250psi WSP @ 400°F
- 17 bar @ 204°C
- 400psi WOG @ 150°F
- 27 bar @ 65°C



Model LF351M

Class 125

Bronze - NPT, Screwed

- Size: ¼" - 3" (8 - 80mm)
- 150psi WSP @ 350°F
- 10 bar @ 176°C
- 200psi WOG @ 150°F
- 13 bar @ 65°C



Model LF352M

Class 250

Bronze - NPT, Screwed Cap

- Size: ¼" - 4" (8 - 100mm)
- 300psi WSP @ 350°F
- 20 bar @ 176°C
- 400psi WOG @ 150°F
- 27 bar @ 65°C

Model 352 ½

Class 250

Bronze - Silbrazed Ends, Screwed Cap

- Size: ¼" - 4" (8 - 100mm)
- 250psi WSP @ 425°F
- 17 bar @ 218°C



Model 353 ½

Class 125

Bronze - Solder Ends, Gasket Cover

- Size: ¼" - 4" (8 - 100mm)
- 175psi WOG @ 250°F
- 12 bar @ 121°C

Model LF358S

Class 125

Bronze - Solder Ends, Screwed Cap

- Size: ¼" - 3" (8 - 80mm)
- 175psi WOG @ 250°F
- 12 bar @ 121°C

Model 758

Class 125

Cast Iron - Flanged Ends, Bolted Flange Cover

- Size: ¾" - 24" (20 - 600mm) to 12" (to 300mm)
- 125psi WSP @ 450°F
- 8 bar @ 232°C
- 200psi WOG @ 150°F
- 13 bar @ 65°C
- 100psi WSP @ 353°F
- 7 bar @ 178°C
- 150psi @ WOG @ 150°F
- 10 bar @ 65°C



Model 752

Class 250

Cast Iron - Flanged Ends, Bolted Flanged Cover

- Size: ½" - 24" (15 - 600mm) to 12" (to 300mm)
- 250psi WSP @ 450°F
- 17 bar @ 232°C
- 500psi WOG @ 150°F
- 34 bar @ 65°C
- 200psi WSP @ 406°
- 13 bar @ 208°C
- 300psi WOG @ 150°F
- 20 bar @ 65°C

Note: Retainer caps/covers shown are for illustration purposes only. They do not necessarily reflect actual product shipped.

Our Screens & Baskets are Designed to Achieve Maximum Straining Efficiency

The most critical aspect to any strainer is straining efficiency and durability. Mueller Steam Specialty's many years of experience and continuous improvements provide the highest quality. We carry a larger inventory of perforated metals and meshes than any other strainer manufacturer in the world. Besides standard metals, we carry thousands of variations of materials and openings. Openings range from 1" to 5 microns.

"Y" Type Strainers

Lead Free*

Model 781 Model 781-SS*



Class 150

Cast Steel/Stainless Steel - Flanged Ends, Bolted Flange Cover

- Size: ½" - 24" (15 - 600mm)
- 150psi WSP @ 565°F
- 10 bar @ 296°C
- 285psi WOG @ 100°F
- 19 bar @ 38°C

Model 782 Model 782-SS*

Class 300

Cast Steel/Stainless Steel - Flanged Ends, Bolted Flange Cover

- Size: ½" - 20" (15 - 500mm)
- 300psi WSP @ 838°F
- 20 bar @ 448°C
- 740psi WOG @ 100°F
- 51 bar @ 38°C

Model 764/764-SS*

Class 600

Cast Steel/Stainless Steel - Flanged Ends, Bolted Flange Cover

- Size: ½" - 20" (15 - 500mm)
- 600psi WSP @ 838°F
- 41 bar @ 448°C
- 1480psi WOG @ 100°F
- 102 bar @ 38°C

Model 781-WE Model 781-SS-WE*



Class 150

Cast Steel/Stainless Steel Butt weld Ends, Bolted Flange Cover

- Size: ½" - 24" (15 - 600mm)
- 150psi WSP @ 565°F
- 10 bar @ 296°C
- 285psi WOG @ 100°F
- 19 bar @ 38°C

Model 782-WE Model 782-SS-WE*

Class 300

Cast Steel/Stainless Steel Butt Weld Ends, Bolted Flange Cover

- Size: ½" - 24" (15 - 600mm)
- 300psi WSP @ 838°F
- 20 bar @ 448°C
- 740psi WOG @ 100°F
- 51 bar @ 38°C

Model 764-WE Model 764-SS-WE*

Class 600

Cast Steel/Stainless Steel Butt Weld Ends, Bolted Flange Cover

- Size: ½" - 16" (15 - 400mm)
- 600psi WSP @ 838°F
- 41 bar @ 448°C
- 1480psi WOG @ 100°F
- 102 bar @ 38°C

Model 765M Model 765M-SS*



Class 900

Cast Steel/Stainless Steel - Flanged Ends, Bolted Flange Cover

- Size: ½" - 10" (15 - 250mm)
- 900psi WSP @ 838°F
- 62 bar @ 448°C*
- 2200psi WOG @ 100°F
- 151 bar @ 38°C

Model 766M Model 766M-SS*

Class 1500

Cast Steel/Stainless Steel - Flanged Ends, Bolted Flange Cover

- Size: ½" - 12" (15 - 300mm)
- 1500psi WSP @ 838°F
- 103 bar @ 448°C
- 3705psi WOG @ 100°F
- 255 bar @ 38°C

Model 767 Model 767-SS*

Class 2500

Cast Steel/Stainless Steel - Flanged Ends, Bolted Flange Cover

- Size: ½" - 12" (15 - 300mm)
- 2500psi WSP @ 838°F
- 172 bar @ 448°C
- 6170psi WOG @ 100°F
- 425 bar @ 38°C

Model 851M

Class 150

Bronze - Flanged Ends, Bolted Flange Cover

- Size: ½" - 12" (15 - 300mm)
- 150psi WSP @ 406°F
- 10 bar @ 208°C
- 225psi WOG @ 150°F
- 15 bar @ 65°C

Model 852

Class 300

Bronze - Flanged Ends, Bolted Flange Cover

- Size: ½" - 12" (15 - 300mm)
- 350psi WSP @ 350°F
- 24 bar @ 176°C
- 500psi WOG @ 150°F
- 34 bar @ 65°C

* Pressure-Temperature Rating for Stainless Steel Models only

Consult factory for Carbon Steel. Optional sizes, materials, baskets, gaskets and mesh liners are available on application.

Mueller Steam Specialty "Y" strainers have generously proportioned bodies with screens that have an open area many times greater than the corresponding pipe size to ensure low pressure loss. All strainers are hydrostatically tested in accordance with applicable ANSI, API and MSS standards.

"Y" Type Strainers

Lead Free*

Model 765M-WE Model 765M-SS-WE*

Class 900

Cast Steel/Stainless Steel - Butt Weld Ends, Bolted Flange Cover

- Size: ½" - 14" (15 - 350mm)
- 900psi WSP @ 838°F
- 62 bar @ 448°C*
- 2200psi WOG @ 100°F
- 153 bar @ 38°C



Model 766M-WE Model 766M-SS-WE*

Class 1500

Cast Steel/Stainless Steel - Butt Weld Ends, Bolted Flange Cover

- Size: ½" - 16" (15 - 400mm)
- 1500psi WSP @ 838°F
- 103 bar @ 448°C
- 3705psi WOG @ 100°F
- 255 bar @ 38°C

Model 767-WE Model 767-SS-WE*

Class 2500

Cast Steel/Stainless Steel - Butt Weld Ends, Bolted Flange Cover

- Size: ½" - 16" (15 - 400mm)
- 2500psi WSP @ 838°F
- 172 bar @ 448°C
- 6170psi WOG @ 100°F
- 425 bar @ 38°C

Model 861-BC Model 861-SS-BC*

Class 600

Cast Steel/Stainless Steel, NPT Ends, Bolted Flange Cover

- Size: ¼" - 2" (8 - 50mm)

Model 862-BC Model 862-SS-BC*

Cast Steel/Stainless Steel, Socket Weld Ends, Bolted Flange Cover

- Size: ½" - 3" (15 - 80mm)
- 600psi WSP @ 838°F
- 41 bar @ 448°C
- 1480psi WOG @ 100°F
- 102 bar @ 38°C

Model 581/581-SS* Model 861/861-SS*

Class 600

Cast Steel/Stainless Steel, NPT Ends & Cap

- Size: ½" - 2" (15 - 50mm)

Model 582/582-SS* Model 862/862-SS*

Class 600

Cast Steel/Stainless Steel, NPT Ends & Screwed Cap

- Size: ¼" - 2" (8 - 50mm)
- 600psi WSP @ 838°F
- 41 bar @ 448°C
- 1480psi WOG @ 100°F
- 102 bar @ 38°C



Model 863M Model 863M-SS*

Class 1500

Cast Steel/Stainless Steel, NPT Ends, Screwed Cap

- Size: ½" - 2" (15 - 50mm)
- 1 ¼", 1 ½", & 2" (32, 40, 50mm) have Bolted Cap



Model 864M Model 864M-SS*

Class 1500

Cast Steel/Stainless Steel Socket Weld End, Screwed Caps

- Size: 1 ¼" - 2" (32 - 50mm)
- 1 ¼", 1 ½" & 2" (32, 40, 50mm) have Bolted Cap
- 1500psi WSP @ 838°F
- 103 bar @ 448°C
- 3705psi WOG @ 100°F
- 255 bar @ 38°C

Model 865 Model 865-SS*

Class 2500

Cast Steel/Stainless Steel, NPT Ends, Bolted Flange Cover

- Size: ½" - 2" (15 - 50mm)



Model 866 Model 866-SS*

Class 1500

Cast Stainless Steel, Socket Weld Ends, Bolted Flange Cover

- Size: ½" - 2" (15 - 50mm)
- 2500psi WSP @ 838°F
- 172 bar @ 448°C
- 6170psi WOG @ 100°F
- 425 bar @ 38°C

* Pressure-Temperature Rating for Stainless Steel Models only

Consult factory for Carbon Steel. Optional sizes, materials, baskets, gaskets and mesh liners are available on application.

Mueller Steam Specialty "Y" strainers have generously proportioned bodies with screens that have an open area many times greater than the corresponding pipe size to insure low pressure loss. All strainers are hydrostatically tested in accordance with applicable ANSI, API and MSS standards.

Basket Type Strainers

Lead Free*

Mueller Steam Specialty Simplex Basket Strainers are called for when the application requires a strainer with an extremely large capacity. Most of these strainers have an open area ratio of 6 to 1 with even greater open area ratios available.

As with all of the Mueller Steam Specialty strainers, basket strainers are available in an almost endless combination of materials, pressures, end connections and cover configurations from 1/4" to 24" (72" in fabricated units). Units are also available in cast iron, bronze, carbon steel, stainless steel, Alloy 20 and most other alloys. The baskets in the Mueller Steam Specialty simplex basket strainers share the same quality of construction as the Mueller Steam "Y" strainers.

From threaded end connections to offset flanged connections, we can provide the exact basket strainer to meet your needs.

Model 125/125-B**

Model 125-CS/125-SS**

Class 125 - 250*

Cast Iron, Bronze, Cast Steel, Stainless Steel NPT Ends, Quick Open Cover with Non-Yoke Knobs, O-ring Seal, & Bolted Cover

- Size: 3/8" - 3" (10 - 80mm)
- 200psi WOG @ 150°F
- 13 bar @ 65°C*



Model 125F/125F-B**

Model 125F-CS/125F-SS**

Class 125 - 250*

Cast Iron, Bronze, Cast Steel, Stainless Steel Flanged Ends, Quick Open Cover with Non-Yoke Knobs on most sizes, O-Ring Seal

- Size 1" - 12" (25 - 300mm)
- 200psi WOG @ 150°F
- 13 bar @ 65°C
- 125psi WSP @ 350°F
- 9 bar @ 177°C



Model 155M

Class 125

Cast Iron Flanged Ends, Side Swing Clamps on 2" - 12", Vertical Swing Clamps on 14" and 16", Bolted Cover

- Size: 2" - 16" (50 - 400mm)
- to 12" 200psi WOG @ 150°F
- (to 300mm) 13 bar @ 65°C
- 14" - 16" 150psi WOG @ 150°F
- (350 - 400mm) 10 bar @ 65°C

* with bolted cover



Model 165

Class 125

Cast Iron Flanged Ends, Flange Cover

- Size: 1 1/4" - 24" (32 - 600mm)
- to 12" For Steam
- (to 300mm) Consult Factory
- 200psi WOG @ 150°F
- 13 bar @ 65°C
- 14" - 24" For Steam
- (350 - 600mm) Consult Factory
- 150psi WOG @ 150°F
- 10 bar @ 65°C



Model 166

Class 250

Cast Iron Flanged Ends, Bolted Flange Cover

- Size 2" - 24" (50 - 600mm)
- to 12" 250psi WSP @ 406°F
- (to 300mm) 17 bar @ 208°C
- 500psi WOG @ 150°F
- 34 bar @ 65°C
- 14" - 24" 200psi WSP @ 406°F
- (350 - 600MM) 13 bar @ 208°C
- 300psi WOG @ 150°F
- 20 bar @ 65°C

Model 165-B

Class 150

Bronze Flanged Ends, Bolted Flange Cover

- Size: 2" - 12" (50 - 300mm)
- 150psi WSP @ 406°F
- 10 bar @ 208°C
- 225psi WOG @ 150°F
- 15 bar @ 65°C



Model 166-B

Class 300

Bronze Flanged Ends, Bolted Flange Cover

- Size: 2" - 12" (50 - 300mm)
- 350psi WSP @ 406°F
- 24 bar @ 176°C
- 500psi WOG @ 150°F
- 34 bar @ 65°C
- 300psi WSP @ 406°F
- 20 bar @ 208°C

Model 185/185-SS†

Class 150

Cast Steel/Stainless Steel Flanged Ends, Bolted Flange Cover

- Size: 1 1/4" - 20" (32 - 500mm)
- 150psi WSP @ 565°F
- 10 bar @ 296°C
- 285psi WOG @ 100°F
- 19 bar @ 38°C



Model 186/186-SS†

Class 300

Cast Steel/Stainless Steel Flanged Ends, Bolted Flange Cover

- Size 1 1/4" - 16" (32 - 400mm)
- 505psi WSP @ 750°F
- 20 bar @ 448°C
- 740psi WOG @ 100°F
- 51 bar @ 38°C



Model 126F-CS

Class 300

Cast Steel/Stainless Steel Flanged Ends, Bolted Flange Cover

- Size: 3/4" - 18" (20 - 450mm)
- 300psi WSP @ 838°F
- 21 bar @ 448°C
- 740psi WOG @ 100°F
- 51 bar @ 38°C

Model 126F-SS

Class 300

Cast Steel/Stainless Steel Flanged Ends, Bolted Flange Cover

- Size: 3/4" - 18" (20 - 450mm)
- 300psi WSP @ 838°F
- 21 bar @ 48°C
- 720psi WOG @ 100°F
- 50 bar @ 38°C

**Pressure-Temperature Rating for Cast Iron Models

Consult factory for other materials. Optional sizes, materials, baskets, gaskets and mesh liners are available on application.

† Pressure-Temperature Rating for Stainless Steel Models only

Consult factory for Carbon Steel. Optional sizes, materials, baskets, gaskets and mesh liners are available on application.

Duplex Strainers

Lead Free*

Many times, critical systems cannot be shut down for strainer basket cleaning. These systems include cooling water, compressors, condensers, fire lines, fuel lines, chemical process systems, pump suction applications and other similar services. For these applications, the Mueller Steam Specialty Duplex Strainer is the perfect choice.

For sizes ¾" through 6", the Revolutionary Ball-Plex™ duplex strainer from Mueller Steam Specialty has all of the features you need. Bubble tight seating, true in-line maintainability, extremely easy seat replacement and long, trouble-free service life in a very simple and rugged design.

Available from stock in cast iron, bronze, carbon steel and stainless steel. Other alloys are also available.

All of the Ball-Plex™ units are standard with 316 SS balls and PTFE seats. Other alloys are also available for the balls.

Threaded and flanged units are available with full rated pressures from Class 125 to Class 300 (Class 600 flanges also available). With the floating ball design and relatively low torque requirements, it is very easy to automate these units for remote operation.

MUELLER STEAM SPECIALTY'S REVOLUTIONARY BALL-PLEX™ STRAINER



¾" - 6" (20 - 150mm)

Model 791-SAH

Class 125

Cast Iron NPT Ends, Knob Type Cover
316 SS Balls

- Size: ¾" - 3" (20 - 80mm)
- 200psi WOG @ 150°F
- 13 bar @ 65°C



Model 792-SBH

Class 150

- Bronze
- Size ¾" - 3" (20 - 80mm)



Model 792-SDH*

Class 150

- Carbon Steel
- Size: ¾" - 3" (20 - 80mm)
- 285psi WOG @ 100°F
- 19 bar @ 38°C



Model 792-SHH

Class 150

- Stainless Steel
- Size: ¾" - 3" (20 - 80mm)

Model 791-FAH

Class 150

Cast Iron Flanged Ends, Knob Type
Cover 316 SS Balls

- Size: 1" - 6" (25 - 150mm)
- 200 psi WOG @ 150°F
- 13 bar @ 65°C

Model 794-SBH

Class 300

- Bronze
- Size: ¾" - 3" (20 - 80mm)

Model 794-SDH*

Class 300

- Carbon Steel
- Size ¾" - 3" (20 - 80mm)
- 740psi WOG @ 100°F
- 51 bar @ 38°C



Model 794-SHH

Class 300

- Stainless Steel
- Size: ¾" - 3" (20 - 80mm)

Model 796-SDH*

Class 600

- Carbon Steel
- Size: ¾" - 3" (20 - 80mm)
- 740psi WOG @ 100°F
- 51 bar @ 38°C

Model 796-SHH

Class 600

- Stainless Steel
- Size: ¾" - 3" (20 - 80mm)



Model 792-FBH

Class 150

- Bronze
- Size: 1" - 6" (25 - 150mm)

Model 792-FDH*

Class 150

- Carbon Steel
- Size: 1" - 6" (25 - 150mm)
- 285psi WOG @ 100°F
- 19 bar @ 38°C

Model 792-FHH

Class 150

- Stainless Steel
- Size: 1" - 6" (25 - 150mm)

Model 794-FBH

Class 300

- Bronze
- Size: 1" - 6" (25 - 150mm)

Model 794-FDH*

Class 300

- Carbon Steel
- Size 1" - 6" (25 - 150mm)
- 740psi WOG @ 100°F
- 51 bar @ 38°C



Model 794-FHH

Class 300

- Stainless Steel
- Size: 1" - 6" (25 - 150mm)



Model 796-FDH*

Class 600

- Carbon Steel
- Size: 1" - 6" (25 - 150mm)
- 740psi WOG @ 100°F
- 51 bar @ 38°C

Model 796-FHH

Class 600

- Stainless Steel
- Size: 1" - 6" (25 - 150mm)

* Pressure-Temperature Rating for Stainless Steel Models only

Consult factory for Carbon Steel. Optional sizes, materials, baskets, gaskets and mesh liners are available on application.

Duplex Strainers - 8" - 24"

Lead Free*

For sizes from 8" - 24" (200 - 600mm), the larger Mueller Steam Specialty duplex strainer is the unit of choice. Using an in-line plug design, quick flow transfer is accomplished with less than a 90° rotation of the handle. Economical actuation of the unit is also available.

Sizes 8" - 16" (200 - 400mm) are available in cast iron, bronze, carbon steel and stainless steel and Class 125 and 150.

Sizes 18" - 24" (450 - 600mm) are fabricated. All units can be supplied with special materials, baskets and coatings.

8" - 24" Duplex Strainers

Model 691 MFA

Class 125

Body: Cast Iron Flanged Ends, Bolted or Clamped Flange Cover

- Size: 8" - 16" (200 - 400mm)
- 150psi @ 150°F
- 10 bar @ 65°C

Model 692 MF

Class 150

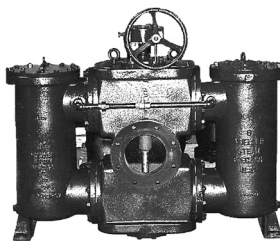
Body: Bronze, Carbon Steel, Stainless Steel Flanged Ends, Bolted or Clamped Flange Cover

Clamp Cover

- Size: 8" - 16" (200 - 400mm)
- 150psi WOG @ 100°F
- 10 bar @ 38°C

Bolted Cover

- Size: 8" - 16" (200 - 400mm)
- 200psi WOG @ 100°F
- 13 bar @ 38°C
- Size: 14" - 16" (350 - 400mm)
- 150 psi WOG @ 100°F
- 10 bar @ 38°C



How to Order

Mueller Steam Specialty **Ball Plex™** Duplex Strainer basic model numbers are based on ANSI Class connections as follows:

791 for Class 125
792 for Class 150
794 for Class 300
796 for Class 600

For Marine and other larger styles:
690 for 50psi (marine duplex with Class 125 flanges)
691 for Class 125
692 for Class 150

Example

Three inch Model 791S-AH (see above) with some special feature such as special baskets, blow-off connections, special O-rings, etc.

This is a Class 125 duplex strainer with NPT Ends, cast iron body and covers, stainless steel balls. The ordering and tagging number is written as follows:

Model #	Code	Example	3.0	791	S	A	H	X
Pipe Size								
Model No								
End								
Body								
Ball								
Special Feature								

Consult factory for all special features. If no special features are required use "O" in place of "X" in the ordering and tagging number.

	Material	Code
End	Flanged	F
	NPT	S
Body	Cast Iron	A
	Bronze	B
	Carbon Steel	D
	Stainless Steel	H
Ball	Monel	Q
	Bronze	B
	Stainless Steel	H

* Pressure-Temperature Rating for Stainless Steel Models only

Consult factory for Carbon Steel. Optional sizes, materials, baskets, gaskets and mesh liners are available on application.

Special Strainers

Fireline Strainers

U.L. approved strainers for fireline service are designed specifically for applications such as automatic water sprinklers and spray systems in firelines. The very large open area ratio helps prevent problems due to clogging of the screen. These units are available with open areas up to seven times the corresponding pipe size. This exceeds the AWWA requirements by almost 200%.

Whether the need is for a "Y" strainer or a basket strainer, Mueller cast iron fireline strainers from 2½" to 12" can meet your needs.

Fabricated Strainers

Mueller Steam Specialty has a long history of providing the highest quality, economical fabricated strainers to meet every need.

Whether the requirement is for a basket strainer, large "Y" strainer, "Tee" type strainer, temporary strainer or large duplex strainer, Mueller will custom engineer and fabricate the exact strainer required. Some of the special features available include:

- Special Dimensions
- Special Baskets
- Special Covers
(Lifting Davits, Quick Opening etc.)
- Special End Connections
- Special Corrosion Allowances
- Special Draining and Cleaning
- Special Certifications:

ASME code stamped, etc.

Meter Strainers

When expensive displacement water meters and other sensitive fluid monitoring devices need to be protected from damage due to particles and debris in the line and space is a problem, the Mueller Steam Specialty meter strainers are the solution.

These units have been designed to meet AWWA requirements of a straining area at least twice the size of the main meter case inlet of turbine type meters.

Available in cast iron and bronze from 1½" to 8", these units are designed to eliminate your meter protection problems.

Lead Free*

Model 595

Class 125

Cast Iron Flanged Ends, U.L. Approved for Fireline Service

- Size: 4" - 12" (100 - 300mm)
- 175psi WOG @ 150°F
- 12 bar @ 65°C



Model 911U

Class 125

Cast Iron Flanged Ends, U.L. Approved for Fireline Service

- Size: 4" - 12" (100 - 300mm)
- 175psi WOG @ 150°F
- 12 bar @ 65°C



Model 781 FAB

Class 150

Carbon Steel, Stainless Steel, and other Alloys, Flanged Ends

- Size 4" - 36" (100 - 900mm)

Model 782 FAB

Class 300

Carbon Steel, Stainless Steel, and other Alloys, Flanged Ends

- Size: 4" - 24" (100 - 600mm)

Model 784 FAB

Class 600

Carbon Steel, Stainless Steel, and other Alloys, Flanged Ends

- Size: 4" - 24" (100 - 600mm)



Model 781 WE-FAB

Class 150

Carbon Steel, Stainless Steel, and other Alloys, Weld Ends

- Size 4" - 36" (100 - 900mm)

Model 782 WE-FAB

Class 300

Carbon Steel, Stainless Steel, and other Alloys, Weld Ends

- Size: 4" - 24" (100 - 600mm)

Model 784 WE-FAB

Class 600

Carbon Steel, Stainless Steel, and other Alloys, Weld Ends

- Size: 4" - 24" (100 - 600mm)

Class 900 and higher available

Model 625

Class 125

Cast Iron Flanged Ends, Bolted Cover

- Size 3" - 8" (80 - 200mm)
- 175psi WOG @ 150°F
- 12 bar @ 65°C



Model 625-B

Class 150

Bronze Flanged Ends, Bolted Cover

- Size: 1½" - 8" (40 - 200mm)
- 175psi WOG @ 150°F
- 12 bar @ 65°C



Fabricated Strainers

Model 22

Basket Type

Carbon Steel, Stainless Steel and other Alloys

- Size: ¾" - 60" (20 - 1500mm)



Model 23

Conical Type

Carbon Steel, Stainless Steel, and other Alloys

- Size ¾" - 60" (20 - 1500mm)



Model 24

Plate Type

Carbon Steel, Stainless Steel, and other Alloys, Flanged Ends

- Size: ¾" - 60" (20 - 1500mm)



Model 185 FAB-B

Class 150

Carbon Steel, Stainless Steel, and other Alloys, Bolted Cover

- Size: 4" - 54" (100 - 1350mm)

Model 186 FAB-B

Conical Type

Carbon Steel, Stainless Steel, and other Alloys, Bolted Cover

- Size 4" - 48" (100 - 1200mm)

Model 188 FAB-B

Class 600

Carbon Steel, Stainless Steel, and other Alloys, Bolted Cover

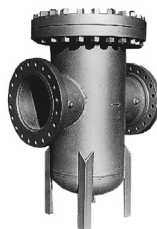
- Size: 4" - 36" (100 - 900mm)

Model 185 FAB-Q

Class 150

Carbon Steel, Stainless Steel, and other Alloys, Quick Opening Cover

- Size: 4" - 36" (100 - 900mm)



Model 41 T-B

Class 150

Carbon Steel, Stainless Steel, and other Alloys, Bolted Cover

- Size: 2" - 36" (50 - 900mm)



Model 42 T-B

Class 300

Carbon Steel, Stainless Steel, and other Alloys, Bolted Cover

- Size 2" - 36" (50 - 900mm)



Model 44 T-B

Class 600

Carbon Steel, Stainless Steel, and other Alloys, Bolted Cover

- Size: 2" - 36" (50 - 900mm)

Model 46 T-B

Class 900

Carbon Steel, Stainless Steel, and other Alloys, Bolted Cover

- Size: 2" - 36" (50 - 900mm)

Model 48 T-B

Class 1500

Carbon Steel, Stainless Steel, and other Alloys, Bolted Cover

- Size: 2" - 36" (50 - 900mm)

Model 41 T-Q

Class 150

Carbon Steel, Stainless Steel, and other Alloys, Quick Opening Cover

- Size: 2" - 36" (50 - 900mm)

Mueller Steam Specialty

has a long history of providing the highest quality, economical fabricated strainers to meet every need. From Class 150 to Class 2500, we produce steel and alloy fabricated strainers to your exact requirements.