

# Essex Brass



CATALOG  
2006

<http://www.essexbrass.com>



## To Our Customers

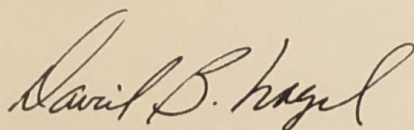
---

Since 1901 when George B. Essex started manufacturing lubricating devices for locomotives and engines, Essex Brass has changed with the demands of our customers and the market place.

While still offering the finest products, all proudly Made in America, we now maintain an inventory that allows us to turn your order around within twenty-four hours. This frees you to minimize your inventory while relying on us to supply you and your customers.

Personal dedication and commitment to excellence have allowed us to achieve a consistently outstanding record of performance in the production of quality products, at such effectively controlled, competitive costs.

Our pledge to you is that you and your customers will always receive excellent performance from our quality assured products and receive the service you demand.



David B. Nagel, President



# **Alphabetical Index**

## **Mailing Address:**

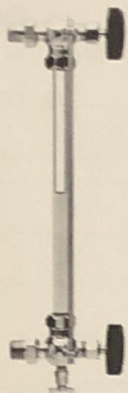
Post Office Box 629  
Warren, Michigan 48090-0629

## **Plant Location - Shipping Address**

23500 Pinewood  
Warren, Michigan 48091-3198  
Phone: (586) 757-8200  
Fax: (586) 757-8257  
E-Mail: [info@essexbrass.com](mailto:info@essexbrass.com)

<b>Item</b>	<b>Page</b>	<b>Item</b>	<b>Page</b>
Air Cocks .....	9, 10, 11	Lubricators, Deep Well Pump .....	17
Air Compressor Lubricators .....	18	Lubricators, Gas Engine	
Air Low Pressure Stops .....	13	Cylinder .....	16, 17, 18
Air Pistols .....	16	Lubricators, Glass Bottle	
"Automatic" Grease Cups .....	15	Machine .....	18
Automatic Lubricators (Electric) .....	17	Lubricators, "Multiplex" .....	17
Automatic Water Gauges .....	4		
Bibb Air Cocks .....	9	Multiple Oilers .....	17
Blow Guns .....	16	Nipples, Hose .....	16
Blower Lubricators .....	16, 18		
Brass Body Lubricators .....	18	Oil Cups, Brass .....	18
Brass Oilers .....	18	Oil Cups, Glass Body .....	16
		Oil Gauges .....	8
Chain Lever Water Gauges .....	4	Oil Guns .....	17
Chain Lever Gauge Cock .....	7	On Line Gauges .....	8
Cocks, Air .....	9	Oil Low Pressure Stops .....	13
Cocks, Compression Gauge .....	7	Oil Syringes .....	17
Cocks, Drain .....	11	Oilers, Brass .....	18
Cocks, Graduated Indicator .....	14	Oilers, Gas Engine Cylinder .....	16
Cocks, Shut-off .....	11	Oilers, Glass .....	16, 17, 18
Cocks, Underwriters' Umbrella .....	11	Oilers, Multiple .....	17
Compact Type Sight Feed Valves .....	12	Oilers, "Plural" .....	17
Compression Gauge Cocks .....	7		
Cups, Brass Oil .....	18	"Pilot" Snap Lever	
Cups, Glass Body Oil .....	16	Sight Feed Oilers .....	16
Cups, Grease .....	15	"Plural" Oilers .....	17
Cups, Priming .....	11	Pneumatic Tank Water Gauges .....	3
		"Positive" Grease Cups .....	15
Deep Well Pump Lubricators .....	17	Pressure Sight Feed Valves .....	12
Dial Cocks .....	14	Priming Cups .....	11
Drain Cocks .....	11		
Expansion Tank Water Gauges .....	3	Quick Opening Water Gauges .....	4, 5
		"Reliable" Steel Grease Cups .....	15
Gas Engine Cylinder Oilers .....	16		
Gauge Cocks, Compression .....	7	Safety Water Gauges .....	4
Gauges, Oil .....	8	Self-Cleaning Water Gauges .....	3, 4
Gauge, Oil Line .....	8	Shut-off Cocks .....	11
Gauge, Water .....	3, 4, 5, 6, 7	Sight Feed Oil Cups .....	16
Glass Body Oil Cups .....	16	Sight Feed Units .....	12
Glass Bottle Machine Lubricators .....	18	Sight Feed Valves .....	12
Glasses, Oil Cup Cylinder .....	16	Sight Feeds, Compact Type .....	12
Grease Cups, Brass .....	15	Solenoid Lubricators .....	17
Grease Cups, Steel .....	15	Solid Bottom Cocks .....	10
Grease and Oil Guns .....	17	Spray Fittings - for air pistols .....	16
Guns, Blow .....	16	Square Body Water Gauge .....	4, 5
Guns, Grease and Oil .....	17	Standard Weight Water Gauges .....	3
		Steam Gauge Cocks .....	7
Heavy Water Gauges .....	3, 4, 5, 6, 7	Steam Low Pressure Stops .....	13
Hose Cocks .....	11	Steel Grease Cups .....	15
Hose Nipples .....	16		
"Hydro" Gas Engine Lubricators .....	16	Umbrella Cocks .....	11
		Underwriters' Cocks .....	11
"Improved Automatic" Grease Cups .....	15		
Indicator Dial Cocks .....	14	Valves, "Magnetic" Solenoid .....	13
		Valves & Stops .....	13, 14
Light Weight Water Gauges .....	3		
Low Pressure Stops .....	13	Water Gauges .....	3, 4, 5, 6, 7
Lubricators, Air Compressor .....	18	Water Low Pressure Stops .....	13
Lubricators, Blower .....	16, 18	"Wolverine" Lubricators .....	18



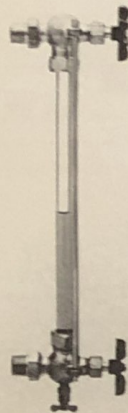


No's. 0, 3 & 7½

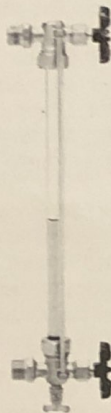
**No's. 0, 3 and 7½**  
**Self-Cleaning Water Gauges**  
 Polished forged body, composition wheels. Tested for pressures up to 200 pounds. Two guards.

All units have drain valve in lower body. Can be ordered with or without Ball Check. Furnished without check unless otherwise specified

Number	Pipe Thread	Glass Size	Rod Length (two per set)
0	3/8"	5/8" O.D. 1½" Shorter than centers	½" Longer than centers
3	½"	5/8" O.D. 1½" Shorter than centers	½" Longer than centers
7½	¾"	¾" O.D. 1½" Shorter than centers	½" Longer than centers



No's. 000, 1 & 1½



No. 1L

**No's. 000, 1 and 1½**  
**Self-Cleaning Water Gauge**  
 Forged body, metal wheels. Tested for pressures up to 200 pounds. Two guards.

**No. 1L**  
 Forged body, metal wheels. Tested for pressures up to 100 pounds. Two guards

Number	Pipe Thread	Glass Size	Rod Length (two per set)
000	3/8"	5/8" O.D. 1½" Shorter than centers	½" Longer than centers
1	½"	5/8" O.D. 1½" Shorter than centers	½" Longer than centers
1½	¾"	¾" O.D. 1½" Shorter than centers	½" Longer than centers
1L	½"	5/8" O.D. 1½" Shorter than centers	½" Longer than centers



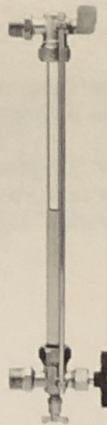
No's. 00000, 0000 & 00

**No's. 00000, 0000 and 00**  
 Expansion tank type. Forged body. Tested for pressures up to 100 pounds. Two guards.

Number	Pipe Thread	Glass Size	Rod Length (two per set)
00000	3/8"	5/8" O.D. 1½" Shorter than centers	½" Longer than centers
0000	½"	5/8" O.D. 1½" Shorter than centers	½" Longer than centers
00	¾"	¾" O.D. 1½" Shorter than centers	½" Longer than centers



No. 28



No. 29

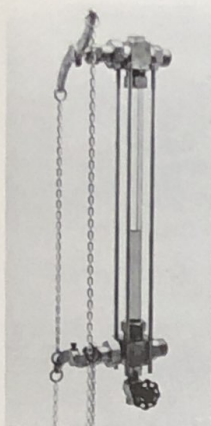
**No. 28**  
 Forged body. Tested for pressures up to 100 pounds. Two guards.

**No. 29**  
 Forged body. Tested for pressures up to 100 pounds. Tapped ¼" I.P. Threaded for pressure gauge. Two guards.

Number	Pipe Thread	Glass Size	Rod Length (two per set)
28	½"	5/8" O.D. 1½" Shorter than centers	½" Longer than centers
29	½"	5/8" O.D. 1½" Shorter than centers	½" Longer than centers

\*\* When ordering gauge glass and guard rods, the center-to-center distance between the upper and lower valve connections must be specified.





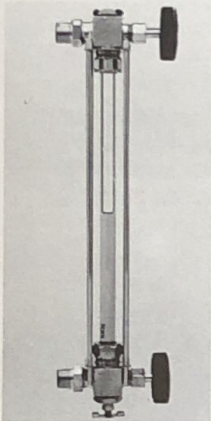
No's. 53 & 54

## No's. 53 and 54

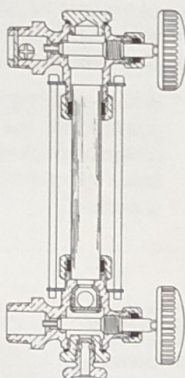
### Chain Lever Water Gauge

Quick opening. Square body with a satin finish and four guards. Tested for pressures up to 400 pounds with hi-pressure glass.

Number	Pipe Thread	Glass Size	Rod Length (four per set)
53	1/2"	3/4" O.D. 2" Shorter than centers	1" Shorter than centers
54	3/4"	3/4" O.D. 2" Shorter than centers	1" Shorter than centers



No's. 9 & 9 1/2



No's. 19G4 & 19G5

## No's. 19G4 and 19G5 Michigan Safety Automatic Water Gauge

Square polished body with four guards. Tested for pressures up to 400 pounds with hi-pressure glass.

Number	Pipe Thread	Glass Size	Rod Length (four per set)
19G4	1/2"	5/8" O.D. 1 1/2" Shorter than centers	3/4" Shorter than centers
19G5	3/4"	3/4" O.D. 2" Shorter than centers	1" Shorter than centers

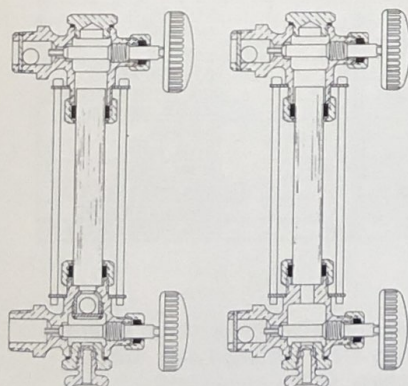
## No's. 9 and 9 1/2

Square polished body with composition wheels and four guards. Tested for pressures up to 400 pounds with hi-pressure glass. Non-automatic without ball checks.

Number	Pipe Thread	Glass Size	Rod Length (four per set)
9	1/2"	5/8" O.D. 1 1/2" Shorter than centers	3/4" Shorter than centers
9 1/2	3/4"	3/4" O.D. 2" Shorter than centers	1" Shorter than centers

## Protex Automatic Oil Gauges

with "Viton" gaskets and packing



No. 35-G

No. 36-G

## No. 35-G for Pressure Tanks No. 36-G for Gravity Tanks

Protex Automatic Oil Gauges with "Viton" gaskets and packing. Polished.

These oil gauges meet the demand for reliable oil tank equipment, for both crude oil and the more volatile refinery products. They shut off instantaneously when glass breaks, thus protecting life and property.

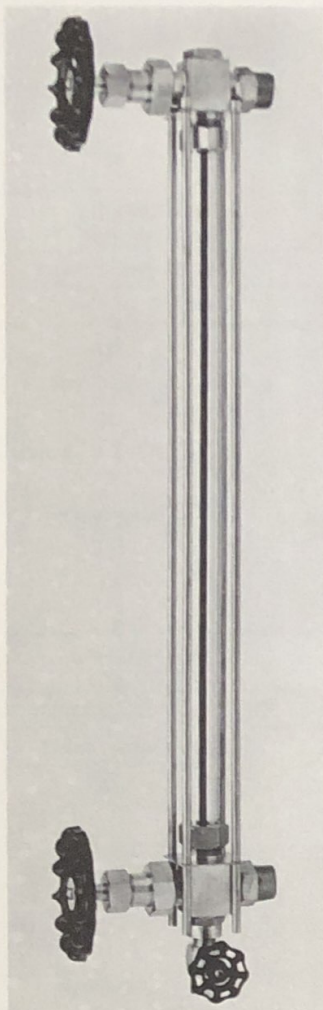
Number	Pipe Thread	Glass Size	Rod Length (four per set)
35G4	1/2"	5/8" O.D. 1 1/2" Shorter than centers	3/4" Shorter than centers
36G4	1/2"	5/8" O.D. 1 1/2" Shorter than centers	3/4" Shorter than centers
35G5	3/4"	3/4" O.D. 2" Shorter than centers	1" Shorter than centers
36G5	3/4"	3/4" O.D. 2" Shorter than centers	1" Shorter than centers

## Clear Rigid Polycarbonate Tubing Available Upon Request

We cannot guarantee or be held liable against glass breakage, clouding up or against eating away or any other cause, which is beyond our control.

\*\* When ordering gauge glass and guard rods, the center-to-center distance between the upper and lower valve connections must be specified.





No's. 53-A & 54-A

See Note "B"

## No's. 53-A and 54-A Navy

These units are manufactured to conform to military specification Mil-I-20037-B and are classified as follows:

**Type 1 — Non-Automatic:** No ball check, suitable for maximum working pressure up to 100 p.s.i.

**Type 2 — Automatic:** Unit has automatic ball check, suitable for maximum working pressure up to 300 p.s.i.

**Class A — General:** Guard rod type protection for gauge glass.

**Class B — Shielded:** Tubular brass shield around gauge glass (price upon request).

Units are available to fit all requirements. In ordering, state size, type, and class required.

Upon request, units can be supplied with A.S.A. or military flanges, 150# or 300# in either 1/2" or 3/4" size. Flanges will be "silver soldered" to bodies.

## Construction:

**Bodies:** Forged Bronze Alloy 632M.

**Trim:** Naval Brass Per QQ-B-637.

**Glass:** "Pyrex" Brand Red Line, Reflex Tubular per Mil-G-2695.

**Rods:** Four 1/4" Diameter Solid Brass.

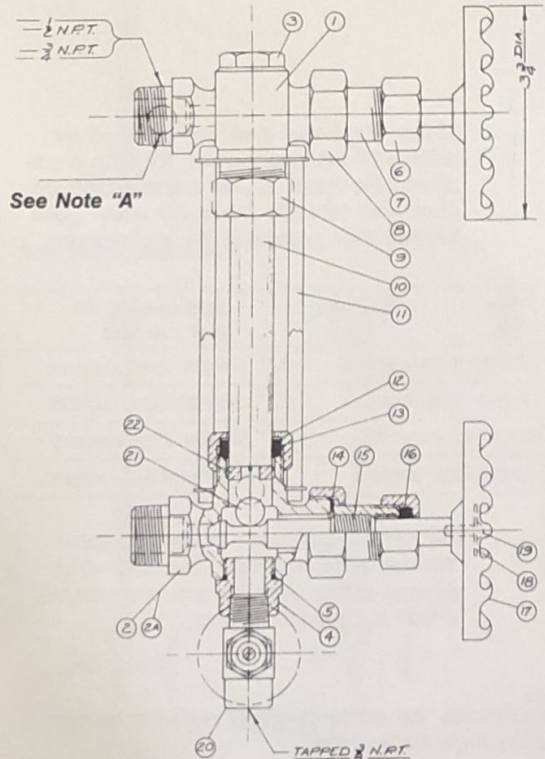
**Drain Valve Connection:** 3/8" Female Pipe.

This unit with "polycarbonate tube" meets "high shock" requirements of Mil-S-901C and the "Vibration" requirements of Mil-Std-167 for Type 1 vibration up to 25 c.p.s. (certified test reports available upon request).

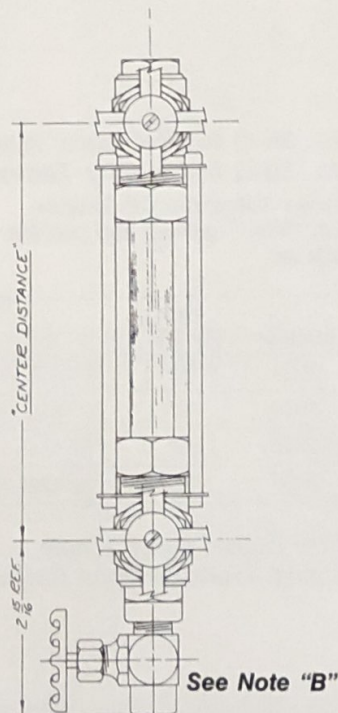
\*\* When ordering gauge glass and guard rods, the center-to-center distance between the upper and lower valve connections must be specified.

Number	Pipe Thread	Glass Size	Rod Length
53-A	1/2"	3/4" O.D. 2" Shorter than centers	1" Shorter than centers
54-A	3/4"	3/4" O.D. 2" Shorter than centers	1" Shorter than centers

Navy Approved.  
U.S.C.G. Approved.  
Each unit individually tested.



See Note "A"



See Note "B"

## Stock List

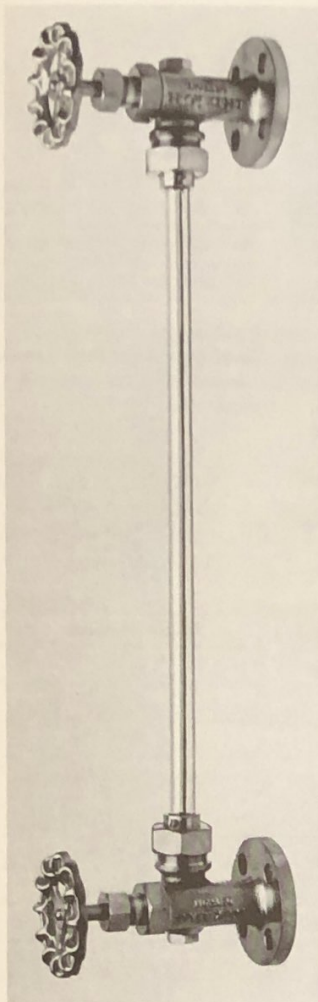
Det.	Part Name	Part Number	Req'd	Material
	FLANGE	SEE ABOVE	2	FORGED ALLOY 485
1	BODY, UPPER	SEE NOTE "B"	1	FORGED ALLOY 632M
2	BODY, LOWER	SEE NOTE "B"	1	FORGED ALLOY 632M
3	PLUG, UPPER	PG-54-U	1	NAVAL BRASS A.S.T.M. B-21
4	PLUG, LOWER	PG-54-L	1	NAVAL BRASS A.S.T.M. B-21
5	"O" RING	R-54	2	VITON
6	STEM PK. NUT	NT-219	2	NAVAL BRASS A.S.T.M. B-21
7	HUB	HU-54	2	NAVAL BRASS A.S.T.M. B-21
8	HUB NUT	NT-54	2	NAVAL BRASS A.S.T.M. B-21
9	GLASS PK. NUT	NT-223	2	NAVAL BRASS A.S.T.M. B-21
10	3/4" O.D. x 1/4" WALL	—	1	—
11	GUARD RODS	1/4" DIA.	4	BRASS A.S.T.M. B-16
12	FIBER WASH.	WA-52	2	HARD FIBER
13	RUBBER WASH.	WA-53	2	VITON
14	HUB WASH.	WA-54	2	NEOPRENE BONDED
15	STEM	ST-226-A	2	NAVAL BRASS A.S.T.M. B-21
16	PK. RING	R-53	2	MOLDED GRAPHITE
17	HANDLE	H-53	2	ALUMINUM
18	WASHER	WA-57	2	BRASS, COMM'L.
19	SCREW	EIL-008	2	BRASS, COMM'L.
20	DRAIN VALVE	DC-53	1	NAVAL BRASS A.S.T.M. B-21
21	BALL	B-54	1	STAINLESS STEEL 18-8
22	RETAINER	RE-54	1	NAVAL BRASS A.S.T.M. B-21

## NOTES:

"A" All units supplied to/for Coast Guard shall be Type II & shall also have a ball check in the upper body.

"B" #53A Lower Body: B0250B  
#53A Upper Body: B0250A  
#54A Lower Body: B0251B  
#54A Upper Body: B0251A  
Type I No Ball Check  
Type II With Ball Check





No. 104-A

### No. 104-A Shock-Proof

This unit meets the high shock requirements of Mil-S-901C, and the vibration requirements of Mil-Std-167, for Type 1 vibration up to 25 c.p.s. (certified test reports available upon request).

Unit per Mil-I-20037-B

Navy approved.

Automatic type - quick closing.

Each unit individually hydrostatically tested at 450 p.s.i.

Unit is of bronze construction with "monel" trim, "viton" seals, and "polycarbonate" tube.

Flanges are integral to bodies and are per A.S.A. standards for  $\frac{3}{4}$ "-150# flanges. Different flanges available upon request.

Unless otherwise specified, unit will be shipped complete with "polycarbonate" tube for 24" centers.

Upon request, this unit can also be supplied with "Pyrex" high pressure gauge glass with "Class B" protective shield.

\*\* When ordering gauge glass and guard rods, the center-to-center distance between the upper and lower valve connections must be specified.

#### Stock List

Det.	Part	Req'd	Material	Spec.	Code
1	BODY, UPPER	1	CAST BRONZE	A.S.T.M.-B-61	A
2	BODY, LOWER	1	CAST BRONZE	A.S.T.M.-B-61	A
3	PLUG	2	"MONEL"	QQ-N-281	A
4	"O" RING	2	"VITON"	MIL-G-23652-1	C
5	SEAT	2	"MONEL"	QQ-N-281	A
6	STEM	2	"MONEL"	QQ-N-281	A
7	STEM PACKING	2	MOLD, GRAPH	GARLOCK 170	C
8	STEM PK. NUT	2	ALUM. SILICON BRONZE	QQ-C-465	A
9	HUB	2	PHOS. BRONZE	A.S.T.M.-B-139,B	A
10	HUB NUT	2	ALUM. SILICON BRONZE	QQ-C-465	A
11	TUBE SUPPORT	2	PHOS. BRONZE	A.S.T.M.-B-139,B	A
12	GROMMET	2	"VITON"	GARLOCK-9663	C
13	GLAND	2	PHOS. BRONZE	A.S.T.M.-B-139,B	A
14	GLAND NUT	2	ALUM. SILICON BRONZE	QQ-C-465	A
15	LOCK SCREW	2	BRASS	COMM'L	C
16	HANDLE SCREW	2	BRASS	COMM'L	C
17	HANDLE WASHER	2	BRASS		C
18	HANDLE	2	CAST BRONZE		C
19	BALL CHECK	1	"MONEL"	QQ-N-281	C
20	BALL RETAINER	1	BRASS		B
21	TUBE $\frac{3}{4}$ " $\times$ $\frac{1}{4}$ " WALL	1	"POLYCARBONATE"	COMM'L	C
22	FLOAT	1	"POLYPROPYLENE"	COMM'L	C

#### CODE

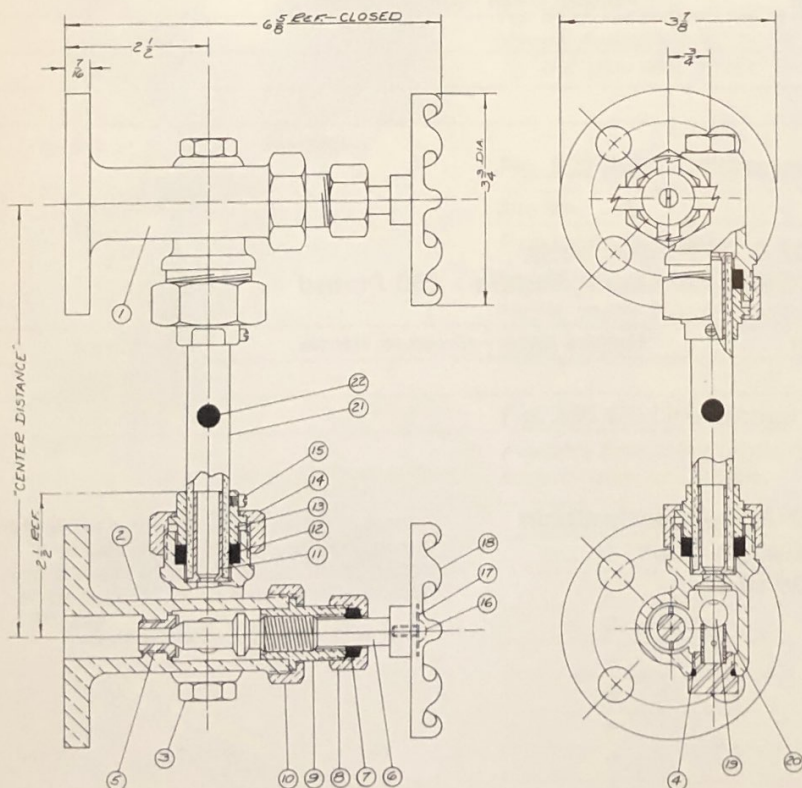
- A. Actual chemical & physical reports.
- B. Certification of compliance acceptable if actual reports are not available.
- C. Certification or actual reports not req'd. — visually inspected.

#### NOTES

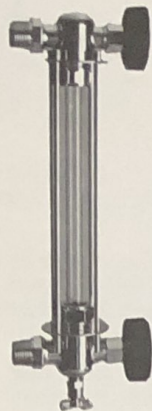
This unit meets "high stock" requirements of Mil-S-901C. Ref.—Lockheed Electronics Co. Test Report #1868-4554, dated 10/23/67.

This unit meets "vibration" requirements of Mil-Std-167 for Type 1 vibration up to and including 25 c.p.s. Ref.—Lockheed Electronics Co. Test Report #2134-3258, dated 7/29/68.

Each unit is hydrostatically tested at 450 p.s.i for not less than one minute. Tube length = center distance, minus 2 inches. Unit wt. (less tube) = 9 lbs., tube wt. = .110 lbs./ft.







No's. 4, 5 & 7

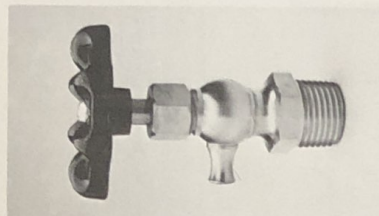
## No's. 4, 5 & 7

Polished forged body, composition handles. Tested for pressures up to 200 pounds. Four guards.

Number	Pipe Thread	Glass Size	Rod Length (four per set)
4	3/8"	5/8" O.D. 1 1/2"	Shorter than centers
5	1/2"	5/8" O.D. 1 1/2"	Shorter than centers
7	3/4"	3/4" O.D. 2"	1" Shorter than centers

- Available in most center distance sizes
- Can be furnished with or without ball check. Furnished without check unless specified.

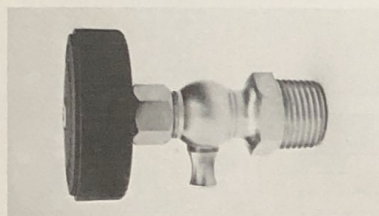
\*\* When ordering gauge glass and guard rods, the center-to-center distance between the upper and lower valve connections must be specified.



No's. 24, 25 & 26 Metal Handle

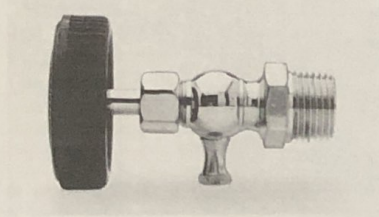
## No's. 24, 25, 26, 24B, 25B, 26B, 24P, 25P & 26P Compression Gauge Cocks - 150 Pound

Number	Machine Finish - Aluminum Handle	Pipe Thread
24		3/8"
25		1/2"
26		3/4"



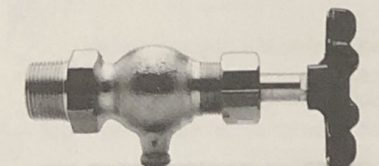
No's. 24B, 25B & 26B Bakelite Handle

Number	Machine Finish - Bakelite Handle	Pipe Thread
24B		3/8"
25B		1/2"
26B		3/4"



No's. 24P, 25P & 26P

Number	Polished Finish - Bakelite Handle	Pipe Thread
24P		3/8"
25P		1/2"
26P		3/4"

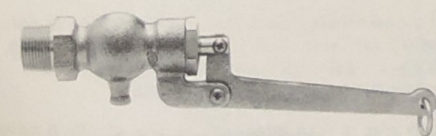


No's. 27 & 28

## No's. 27 & 28 Forged body.

Teflon Seat, Aluminum Handle - 250 Pound

Number	Machine Finish - Aluminum Handle	Pipe Thread
27		1/2"
28		3/4"



No. 117

## No. 117 Rough Body Chain Lever Gauge Cock 250 Pound

Attached to water columns out of reach, this gauge cock may be easily operated by a chain or rod fastened to the end of the lever. Available in 1/2" and 3/4" N.P.T.-250# S.W.P.

Now with teflon seat, chain optional.





Fig. 522



Fig. 524



Fig. 526



Fig. 527



Fig. 530

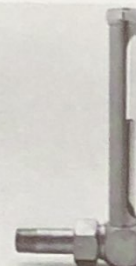


Fig. 550 with union



Fig. 540



Fig. 540S



Fig. 202



Fig. 265

## Figs. 522, 524, 526, 527, 530 and Fig. 550 Oil Gauges

Our oil gauges are made in standard sizes as quoted in table below, but they can also be made in various combinations to meet special requirements. Special sizes made to your specifications.

Length applies only to those gauges which have shanks, viz: Figs. 526 and 527. Height and length are measured from center line of base to top of gauge and end of shank respectively.

### Dimensions – Figs. 522, 524, 526, 527, and 530 (see 550 below)

Size No.	0	1	2	3	4	5	6
Pipe thread on shank	1/8"	1/8"	1/4"	1/4"	1/4"	3/8"	1/2"
Length, center line of glass to end of shank	1 3/4"	1 3/4"	1 3/4"	1 3/4"	2 3/4"	2 3/4"	2 3/4"
Height, center line of shank to top of gauge	2 9/16"	3 1/16"	3 1/16"	3 13/16"	4 11/16"	6 1/16"	6 1/8"
Fig. 530 only – height	2 9/16"	3 1/8"	3 1/8"	3 7/8"	4 7/8"	6 3/16"	6 1/4"
Glass length (dia. is 5/8")	1 7/8"	2 3/8"	2 3/8"	3 1/8"	4 1/8"	5 3/8"	5 3/8"

### Dimensions – Fig. 550 only (with union)

Size No.	0	1	2	3	4	5	6
Pipe thread on shank	1/8"	1/8"	1/4"	1/4"	1/4"	3/8"	1/2"
Length, center line of glass to end of shank	2 1/8"	2 1/8"	2 1/8"	2 1/8"	2 1/8"	2 3/4"	3"
Height, center line of shank to top of gauge	2 5/16"	2 13/16"	2 13/16"	3 9/16"	4 9/16"	5 7/8"	5 15/16"

## Figs. 540 and 540S Gear Case Oil Gauges

Essex gear case oil gauges are constructed for easy removal of sight glass for cleaning, replacement or repacking.

Fig. 540S is equipped with a reflector screen. Available in 3/8", 1/2", 3/4", 1", 1 1/4", 1 1/2" & 2" pipe with "Pyrex" Glass.

Fig. 540 available in the following sizes: 1/4", 3/8", 1/2", 3/4", 1", 1 1/4", 1 1/2" & 2" pipe with "Pyrex" Glass. Available in Brass Carbon Steel & Stainless Steel.

## Fig. 202 Plain Oil Gauges without shield

Size No.	0	1	2	3
Pipe thread on shank	1/8"	1/4"	3/8"	1/2"
Length, center line of glass to end of shank	1 5/8"	1 3/4"	2 1/2"	4"
Height, center line of shank to top of gauge	2 1/2"	3 1/8"	3 3/4"	4 7/8"
Glass length	2"	2 1/2"	3"	4"

## Fig. 265 Oil Line Gauge

Available female both ends, male both ends, or male and female.

Female – both ends supplied, unless otherwise specified.

Size No.	Pipe Thread	Total Length	Window Length
1	1/8"	2 7/16"	1 3/16"
2	1/4"	3"	1 3/16"
3	3/8"	3"	1 3/16"
4	1/2"	4 1/2"	2 1/4"
5	3/4"	4 1/2"	2"
6	1"	5"	2 3/8"
7	1 1/4"	5 1/4"	2 3/8"
8	1 1/2"	5 1/2"	2 3/8"

On #1 only – O.A.L. of MxM unit 3/8" longer and O.A.L. of MxF unit 3/16" longer.



## Air Cocks

Air cocks are rated for service to 100 p.s.i. at moderate temperatures. Not recommended for use with steam or liquid. Individually tested for higher pressures if needed.

Essex air cocks and shut-off cocks are spring-key type cocks of all brass construction with stainless steel springs.

Machine finish is standard on all air cocks, with polished or plated finish available at extra cost.

\*These sizes have hexagon shoulders, others are as illustrated.



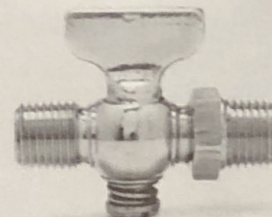
**Tee Handle - Plain**

Number	6	7	8*	9*
Pipe Size	1/8"	1/4"	3/8"	1/2"



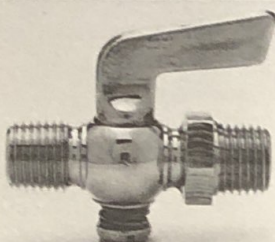
**Lever Handle - Plain**

Number	12	13	14*	15*	16*
Pipe Size	1/8"	1/4"	3/8"	1/2"	3/4"



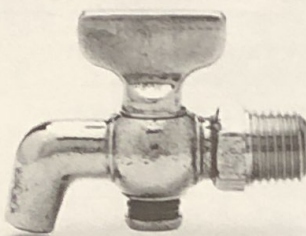
**Tee Handle - Double Male**

Number	18	19	20	21
Pipe Size	1/8"	1/4"	3/8"	1/2"



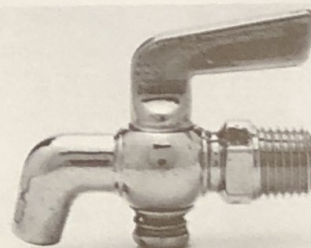
**Lever Handle - Double Male**

Number	22	23	24	25
Pipe Size	1/8"	1/4"	3/8"	1/2"



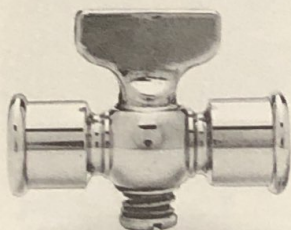
**Tee Handle - with Bibb**

Number	26	27	28	33
Pipe Size	1/8"	1/4"	3/8"	1/2"



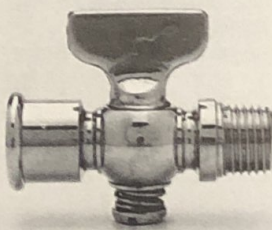
**Lever Handle - with Bibb**

Number	29	30	31	32
Pipe Size	1/8"	1/4"	3/8"	1/2"



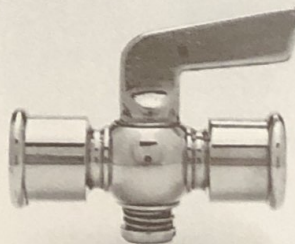
**Tee Handle - Double Female**

Number	37	38	39
Pipe Size	1/8"	1/4"	3/8"



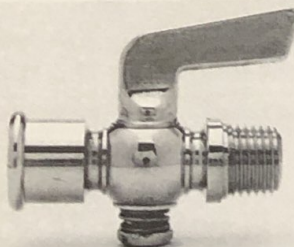
**Tee Handle - Male and Female**

Number	40	41	42
Pipe Size	1/8"	1/4"	3/8"



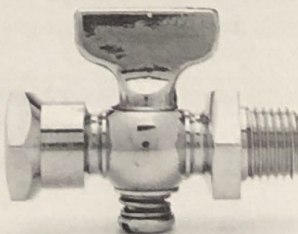
**Lever Handle - Double Female**

Number	43	44	45	45A
Pipe Size	1/8"	1/4"	3/8"	1/2"



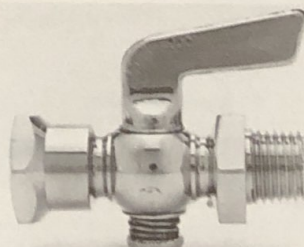
**Lever Handle - Male and Female**

Number	46	47	48	48A
Pipe Size	1/8"	1/4"	3/8"	1/2"



**Tee Handle - Male and Female Hexagon Shoulder**

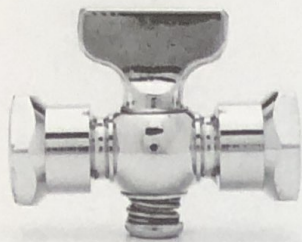
Number	49	50	51
Pipe Size	1/8"	1/4"	3/8"



**Lever Handle - Male and Female Hexagon Shoulder**

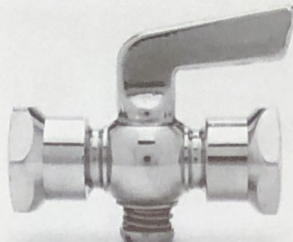
Number	52	53	54	54A
Pipe Size	1/8"	1/4"	3/8"	1/2"





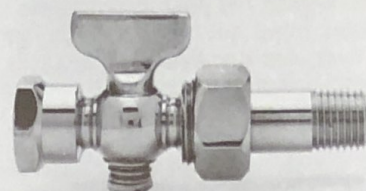
**Tee Handle - Double Female Hexagon Shoulder**

Number	55	56	57
Pipe Size	1/8"	1/4"	3/8"



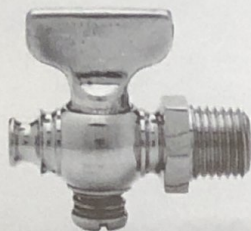
**Lever Handle - Double Female Hexagon Shoulder**

Number	58	59	60	60A
Pipe Size	1/8"	1/4"	3/8"	1/2"



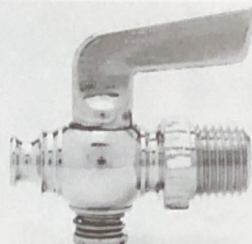
**Tee Handle - Female with Male Union**

Number	81-T
Pipe Size	1/4"



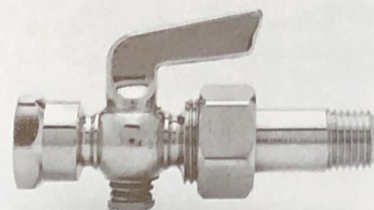
**Tee Handle - Hexagon Shoulder**

Number	63-T	64-T
Pipe Size	1/8"	1/4"



**Lever Handle - Hexagon Shoulder**

Number	63-L	64-L
Pipe Size	1/8"	1/4"



**Lever Handle - Female with Male Union**

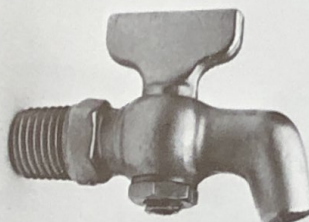
Number	81-L
Pipe Size	1/4"

## Solid Bottom Cocks

**Solid Bottom Cocks** are rated to 125 s.p. Individually tested for higher pressures if needed.

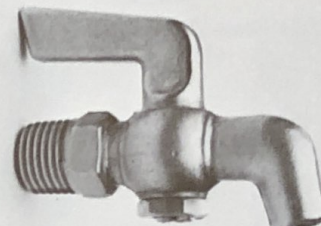
**Machine finish** is standard on all **Solid Bottom** cocks, with polished or plated finish available at extra cost.

**Other Solid Bottom Cocks** are available upon request.



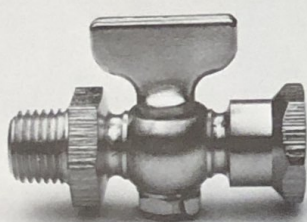
**Tee Handle - with Bibb**

Number	SC	27
Pipe Size		1/4"



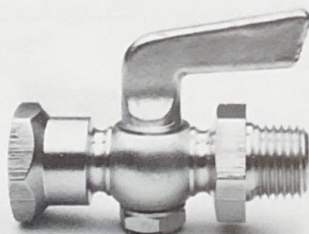
**Lever Handle - with Bibb**

Number	SC	30
Pipe Size		1/4"



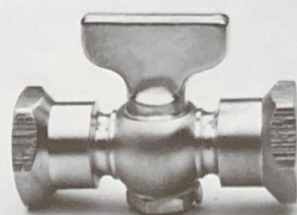
**Tee Handle - Male and Female Hexagon Shoulder**

Number	SC	49	50	51
Pipe Size		1/8"	1/4"	3/8"



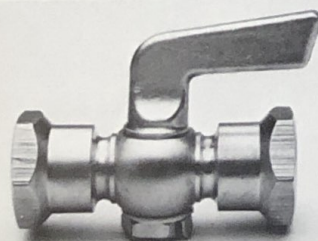
**Lever Handle - Male and Female Hexagon Shoulder**

Number	SC	52	53	54
Pipe Size		1/8"	1/4"	3/8"



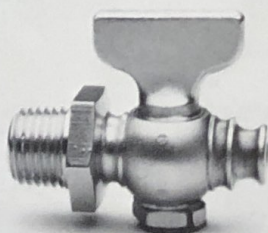
**Tee Handle - Double Female Hexagon Shoulder**

Number	SC	55	56	57
Pipe Size		1/8"	1/4"	3/8"



**Lever Handle - Double Female Hexagon Shoulder**

Number	SC	58	59	60
Pipe Size		1/8"	1/4"	3/8"



**Tee Handle - Hexagon Shoulder**

Number	SC	63-T	64-T
Pipe Size		1/8"	1/4"



**Lever Handle - Hexagon Shoulder**

Number	SC	63-L	64-L
Pipe Size		1/8"	1/4"

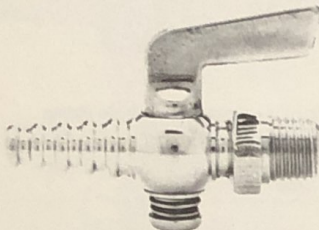


## Shut-off Cocks

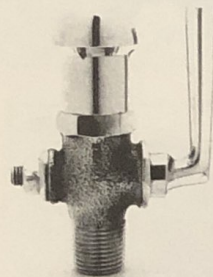
Air cocks or shut-off cocks are rated for service to 100 p.s.i. at moderate temperatures. Not recommended for use with steam or liquid. Individually tested for higher pressures if needed. Flared tube connections are SAE 45° type. Compression connections are "ball sleeve" type. All cocks with tube connections are furnished without nuts or sleeves, unless otherwise specified on order.

Essex air cocks and shut-off cocks are spring-key type cocks of all brass construction with stainless steel springs.

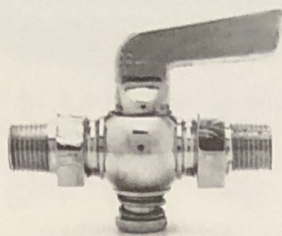
Machine finish is standard on all air cocks, with polished or plated finish available at extra cost.



#119 Male Hose Cock for 3/8" Hose. Available with 1/8", 1/4", 3/8", 1/2" Male Pipe Thread.

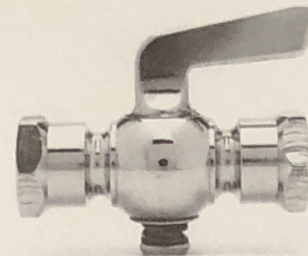


#125 Underwriters Cock with Umbrella Hood. 1/2" Male Pipe Thread only.



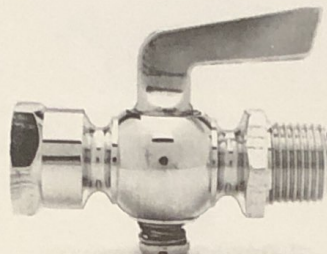
Male Pipe Thread Both Ends

Number	110	111	112	113
Pipe Size	1/8"	1/4"	3/8"	1/2"



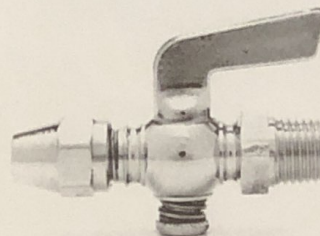
Female Pipe Thread Both Ends

Number	120	121	122	123
Pipe Size	1/8"	1/4"	3/8"	1/2"



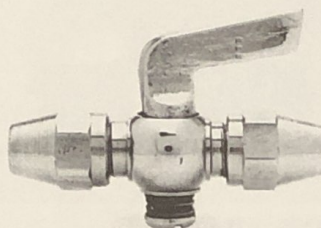
Male and Female Pipe Thread

Number	130	131	132	133
Pipe Size	1/8"	1/4"	3/8"	1/2"



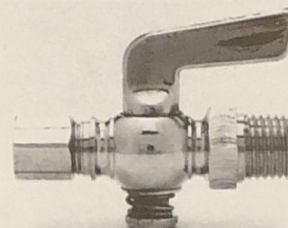
Flared Tube and Male Pipe Thread

Number	140	141	142	143	144	145
Tube O.D.	1/4"	1/4"	5/16"	5/16"	3/8"	1/2"
Pipe Size	1/8"	1/4"	1/8"	1/4"	1/4"	3/8"



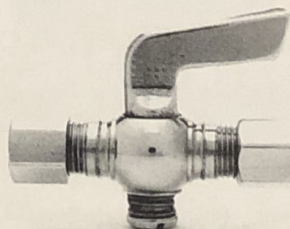
Flared Tube Both Ends

Number	150	151	152	153
Tube O.D.	1/4"	5/16"	3/8"	1/2"



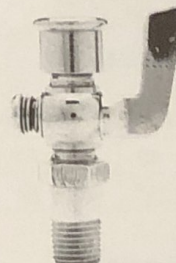
Compression Tube and Male Pipe Thread

Number	160	161	162	163	164	164A	165
Tube O.D.	1/4"	1/4"	5/16"	5/16"	3/8"	3/8"	1/2"
Pipe Size	1/8"	1/4"	1/8"	1/4"	1/4"	3/8"	3/8"



Compression Tube Both Ends

Number	170	171	172	173
Tube O.D.	1/4"	5/16"	3/8"	1/2"



Number	503	507
Pipe Size	1/8"	1/4"

Priming Cups. Long Shank Type with Male Pipe Thread.

## Drain Cocks



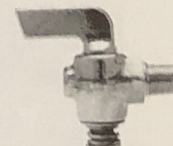
#DC-100 Forged Handle Type, Sizes 1/8" and 1/4" pipe.



#DC-101 Side Outlet Type, Sizes 1/8" and 1/4" pipe.



#DC-102 Back Seating Type, Sizes 1/8" and 1/4" pipe.



Lever Handle Drain Cock

No.	180	181	182	183
Pipe Size	1/8"	1/4"	3/8"	1/2"



## Sight Feed Valves

**Fig. 520 Compact Type  
Sight Feed Valves**

**With needle valve feed stems.**

Threaded connections are  $\frac{1}{8}$ " male or  $\frac{1}{8}$ " female, and unions are drilled for  $\frac{1}{4}$ " O.D. tubing.

\*Type "C" outlet  $\frac{1}{8}$ " N.P.T. Female,  $\frac{1}{4}$ " N.P.T. Male Union available upon request.  $\frac{1}{4}$ " N.P.T. Inlet.

Compact Type "C" Outlet  $\frac{1}{4}$ " compression tube fitting.  $\frac{1}{4}$ " N.P.T. Inlet.

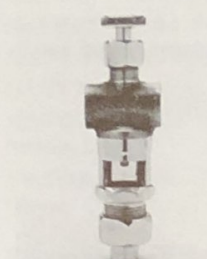
Both are furnished for gravity service without ball-checks unless your order specifies "with ball-check" or "for pressure."



**Style A**  
Straight pattern,  
male ends.



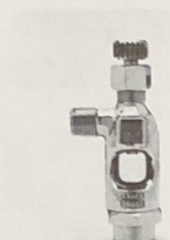
**Style B**  
Angle pattern,  
male ends.



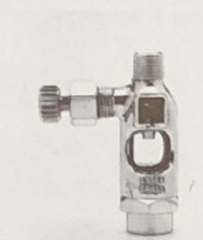
**Type C\***



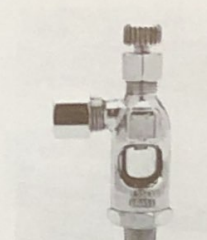
**Compact  
Type C\***



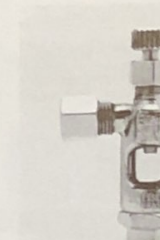
**Style E**  
Angle pattern,  
male inlet,  
female outlet.



**Style F**  
Straight pattern,  
male inlet,  
female outlet.



**Style G**  
Angle pattern,  
union inlet,  
male outlet.

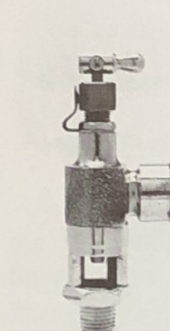


**Style H**  
Angle pattern,  
union inlet,  
female outlet.

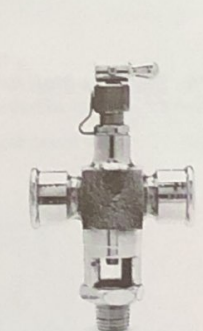
**Figs. 7, 70, 71, 72, 73, 74, 76, and 79  
Snap Lever Sight Feed Valves**

**For piping oiling systems on engines  
and machinery.**

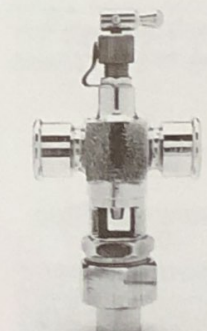
Each snap level sight feed valve is  
available in  $\frac{1}{8}$ ",  $\frac{1}{4}$ ", and  $\frac{3}{8}$ ".



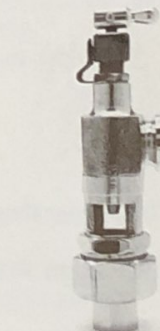
**Fig. 7**  
Angle sight  
feed valve.



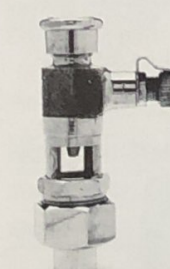
**Fig. 70**  
Cross sight  
feed valve.



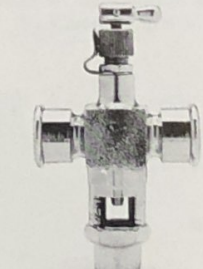
**Fig. 71**  
Cross sight  
feed valve,  
shank union.



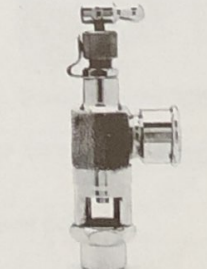
**Fig. 72**  
Corner sight  
feed valve,  
shank union.



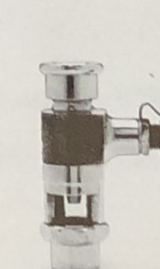
**Fig. 73**  
Straight sight  
feed valve,  
shank union.



**Fig. 74**  
Cross sight  
feed valve.



**Fig. 76**  
Angle sight  
feed valve.



**Fig. 79**  
Straight sight  
feed valve.

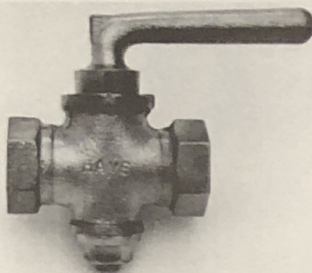


**No. 1040**

**Standard Low Pressure Stop**

**No's. 1600, 1605, & 1610**

**Steam Stops**



**No. 1040 Standard Low Pressure Stop for Water, Oil, and Air.** Working pressure up to 50 pounds. All brass construction. Sizes 1/4" thru 1" female I.P.



**No's. 1600, 1605, & 1610 Steam Stops for Steam, Water, Gas, Oil, and Air.** Working pressure up to 125 pounds. Bronze steam metal construction.

No. 1600 Flat head stop, 1/4" thru 2" female I.P.

No. 1605 Square head stop (illustrated), 1/4" thru 3" female I.P.

No. 1610 Square head stop with wrench, 1/4" and 1/2" thru 3" female I.P.

**No's. 7000 & 7005 Gas Stops**



**No. 7000 Gas Stop**  
service

No. 7000

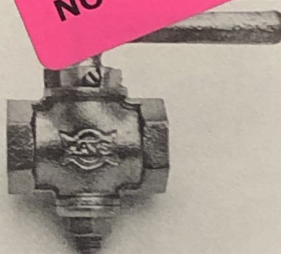


**No. 7005 Square Head Stop for Low Pressures.** Gas service. Bronze construction.

No. 7005 Square head stop, 1/2" thru 3" female I.P.

**No. 7080 Low Pressure Gas Stop**

**No. 7305 High Pressure Stop**



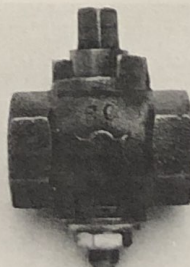
**No. 7080 Low Pressure Gas Stop for Stoves & Appliances.** All bronze construction. Sizes 1/4" thru 2" female I.P.



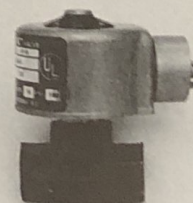
**No. 7305 High Pressure Stop for Steam, Water, Gas, Oil, and Air.** Working pressure up to 250 pounds. Bronze steam metal construction. Square head 1/2" thru 1 1/2".

**No. 7450 All Iron Stop**

**No. 2145 Midg-O-Matic Valve**



**No. 7450 All Iron Stop for Steam, Water, Gas, Oil, and Air.** Working pressure up to 150 pounds. All iron construction. Sizes 1/4" thru 3" female I.P. Square head.



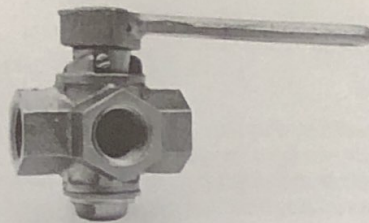
**No. 2145 Midg-O-Matic Valve**  
Working pressure up to 100 pounds. 140°F. max. temperature, 1/4" female I.P. only, with 1/8" orifice; Waterproof coil. Cast bronze body. Conduit outlet.

Available in 24V, 120V, 208V, 240V, 480V. 50/60 cycle, A.C. only.

**HAYS PRODUCTS  
NO LONGER AVAILABLE**

**LIMITED QUANTITIES AVAILABLE ON ALL**





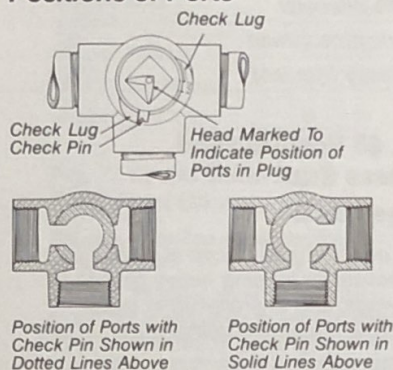
No's. 7600, 7605, 7610, &amp; 7615

### No's. 7600, 7605, 7610, & 7615 Three-Way Stops – Two and Three Port

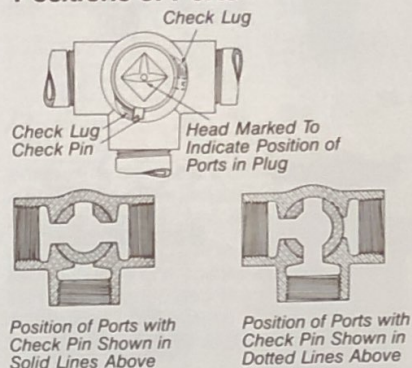
**Flat Way.** Steam working pressure of 150 pounds. **For Steam, Water, Gas, Oil, and Air.** Bronze steam metal.

No. 7600 – Three Port – with handle.  
No. 7605 – Three Port – less handle.  
No. 7610 – Two Port – with handle.  
No. 7615 – Two Port – less handle.  
No. 7605 and No. 7615 Sizes 1/4" thru 3" female I.P.  
No. 7600 and No. 7610 Sizes 3/8" thru 3" female I.P.

### Two Port Chart Explaining Positions of Ports



### Three Port Chart Explaining Positions of Ports

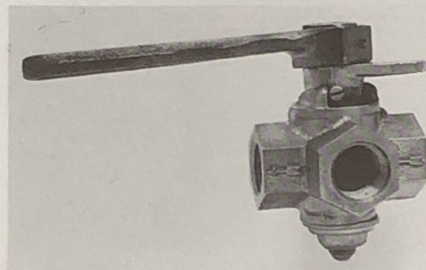


No. 7620

### No. 7620 Graduated Dial Stop

**The Basic Throttling Valve of Industry**  
for Steam, Water, Gas, and Air. Working  
pressure 150 lbs.

Minimum pressure drop.  
Positive shutoff.  
Bronze steam metal construction with  
"half diamond" flow way.  
Sizes 1/4" thru 2" female I.P.



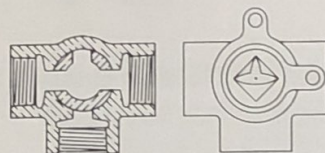
No. 7601-1

### No. 7601-1 Three-Port Safety Valve

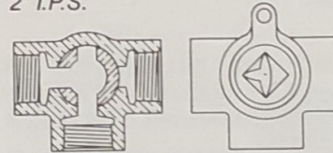
The locking design permits the  
valve in the off or exhaust position  
that the valve cannot be accidentally  
opened while the equipment is being  
serviced.

### Lock Features:

Cast bronze body.  
Plug and body ground for perfect  
seating.  
Buna-N "O" rings 1/2", 3/4" and 1" I.P. only.  
Air tested to 100 lbs. under water.  
Presently available in sizes 1/2" through  
2" I.P.S.



Open or Unlocked Position



Closed or Locked Position



No. 7690

### No. 7690 Malleable Iron Wrenches for Square Head Stops

Size of Stop	1/4"	3/8"	1/2"	3/4"	1"	1 1/4"	1 1/2"	2"	2 1/2"	3"
Stop No.	Wrench Number									
1605	3	3	3	4	5	6	7	8	8	9
7005	3	3	3	4	5	6	7	8	8	9
7305	3	—	4	5	6	—	8	—	—	—
7450	3	3	3	5	6	7	8	9	8	9
7605	3	3	4	5	6	7	8	8	8	9
7615	3	3	4	5	6	7	8	8	8	9

**HAYS PRODUCTS  
NO LONGER AVAILABLE**



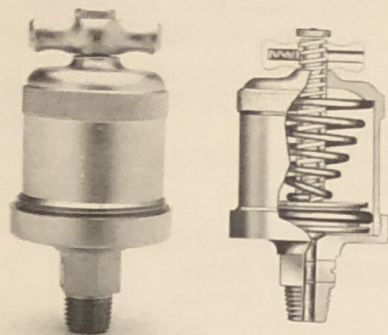


Fig. 65

## Fig. 65 Improved Automatic Grease Cup

**Forged Brass With "O" Ring Plunger.**

The improved automatic grease cup is of extra heavy substantial construction. It is particularly well adapted for use on movable bearings or where there is

excessive vibration. The body of this cup unscrews from the bottom for filling which is regarded by some engineers as a more convenient arrangement.

Number	00	1	2	4
Inside diameter	1"	1 1/2"	2"	3"
Shank pipe thread	1/8"	1/4"	3/8"	1/2"
Capacity (grease)	1/3 oz.	1 1/2 oz.	3 oz.	10 oz.

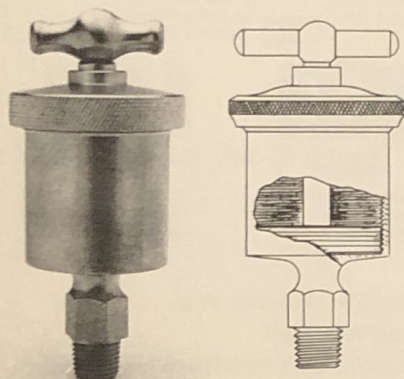


Fig. 85

## Fig. 85 Positive Feed Grease Cup

**Forged Brass**

Our positive grease cup is made expressly for feeding heavy grease to bearings, and is preferred in many cases to the spring compression style,

especially where the temperature is continually changing. This cup is recommended for **marine** purposes and is as durable as it is reliable.

Number	00	1	2	4
Inside diameter	1"	1 1/2"	2"	3"
Shank pipe thread	1/8"	1/4"	3/8"	1/2"
Capacity (grease)	1/3 oz.	1 1/2 oz.	3 oz.	10 oz.

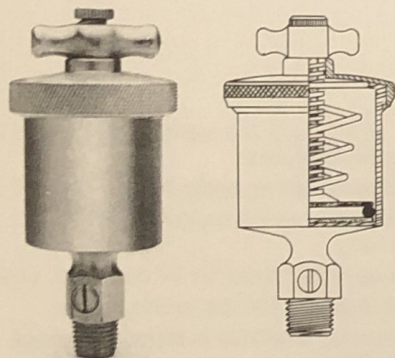


Fig. 95

## Fig. 95 Automatic Grease Cup

**Forged Brass**

For stationary or movable bearings, Essex grease cups provide continuous pressure on the lubricant which forces

the grease down on the bearing. The outlet through the shank is provided with a plug to regulate the quantity.

Number	00	1	2	4
Inside diameter	1"	1 1/2"	2"	3"
Shank pipe thread	1/8"	1/4"	3/8"	1/2"
Capacity (grease)	1/3 oz.	1 1/2 oz.	3 oz.	10 oz.

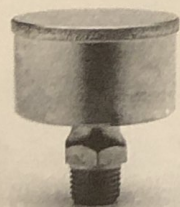


Fig. 75

## Figs. 75 and 275 Reliable Grease Cups

Fig. 75 is machined from brass for use where this material is more desirable.

Number	0	1	2
Inside diameter	1 1/4"	1 1/2"	2"
Shank pipe thread	1/8", 1/4"	1/8", 1/4"	1/8", 1/4", 3/8"
Capacity (grease)	2/3 oz.	1 oz.	2 oz.



Fig. 275

Fig. 275 is pressed from steel. This cup is strong and durable, and will last indefinitely. Threads are smooth and tight-fitting.

Number	000	00	0	1	2	3
Inside diameter	13/16"	1"	1 1/4"	1 1/2"	2"	2 1/2"
Shank pipe thread	1/8" or 1/4"	1/8" or 1/4"	1/8" or 1/4"	1/4"	1/8", 1/4", 3/8", 1/2"	3/8", 1/2"
Capacity (grease)	1/4 oz.	1/2 oz.	2/3 oz.	1 oz.	2 oz.	3 1/2 oz.



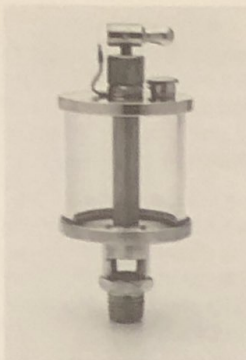


Fig. 33-A

**Fig. 33-A Pilot Snap Lever Sight Feed Oiler**

**With snap filler opening.**

Careful design has made this oiler the choice for first rate machinery and engines. Clean lines and handsome construction are the marks of this strong and substantially built oiler. Simple in operation with few moving parts lowering the

risk of malfunction, this compact device resists high levels of vibration, offering greater durability and longer life.

**To Operate Cup:** Raise lever to stand perpendicular. Raise or lower the valve stem by turning the milled nut till the proper feed is obtained. To flush bearing, move lever to an angle of 45 degrees. Illustration above shows cup with feed shut off.

Size No.	00	0	1	1½	2	3	4	5	6	7
Outside diameter of glass	1⅞"	1¼"	1½"	1¾"	2"	2¼"	2½"	3"	3½"	4¼"
Height of glass	1"	1⅞"	1⅜"	1⅝"	1⅞"	2⅞"	2⅜"	3"	4"	5"
Shank pipe thread	⅞"	⅞"	¼"	¼"	⅜"	⅜"	⅜"	½"	½"	¾"
Capacity, ounces	½	⅝	1	1½	2½	4	5	10	Pint	Quart



Fig. 77

**Fig. 77 Hydro Glass Body Sight Feed Oiler**

**For gas, gasoline or oil engines, blowers, etc.**

Our Fig. 77 glass body gas engine lubricator is designed to feed oil directly into the cylinders of gas engines. The bent tube, shown within the cup, conveys

pressure to the upper part of the body, where it equalizes pressure on the oil, allowing gravity to feed the oil.

Regulation of the feed is accomplished by the turning of a knurled adjusting nut. Oil feed is started and stopped by raising or lowering a snap lever. Shanks are fitted with ball check to prevent oil from blowing back.

Size No.	1½	2	3	4	5	6	7
Outside diameter of glass	1¾"	2"	2¼"	2½"	3"	3½"	4¼"
Height of glass	1⅞"	1⅞"	2⅞"	2⅜"	3"	4"	5"
Shank pipe thread	¼"	⅜"	⅜"	⅜"	½"	½"	¾"
Capacity (oil)	1½ oz.	2½ oz.	4 oz.	5 oz.	10 oz.	Pint	Quart

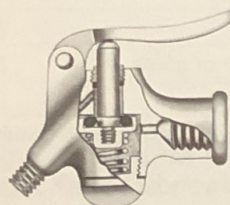
## Air Pistols and Gauge Cocks



Fig. 210

**Fig. 210 Nozzle Threaded 1/8" N.P.T.**

Sizes 1/8", 1/4", 3/8" and 1/2" pipe.



**Fig. 215 Air Safety Nozzle, Brass**

Nozzle acts as a pressure regulator and reduces air pressure to 30 psi, 6 scfm (Max.). Specify 1/8" male or female pipe.

The "O" ring seat found in all Essex air pistols assures leakproof performance and economy of air. The rugged brass body can take the punishment of industrial service like no other brand on the market. Ease of maintenance is another desirable feature since "O" ring replacement, which is available anywhere, makes it perform like new after years of service.

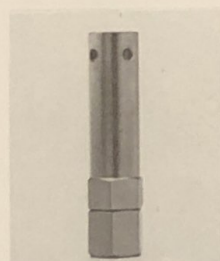


Fig. 215



Fig. 260

**Fig. 260 Improved Spray Fitting Tapped 1/8" Pipe With 3/8" Hose Nipple With Renewable Nozzle.**

The pistol nozzle is threaded 1/8" pipe. For spraying, painting, cleaning, and a variety of other tasks, this makes an ideal combination.

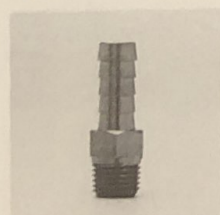


Fig. 270

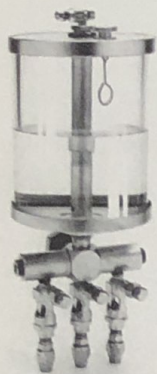
**Fig. 270 Brass Hose Nipple**

1/8" Hose, 1/8" I.P. Thread	3/8" Hose, 3/8" I.P. Thread
3/16" Hose, 1/8" I.P. Thread	1/2" Hose, 1/4" I.P. Thread
1/4" Hose, 1/4" I.P. Thread	1/2" Hose, 3/8" I.P. Thread
1/4" Hose, 1/4" I.P. Thread	1/2" Hose, 1/2" I.P. Thread
1/4" Hose, 3/8" I.P. Thread	3/4" Hose, 1/2" I.P. Thread
3/8" Hose, 1/8" I.P. Thread	1" Hose, 1" I.P. Thread
3/8" Hose, 1/4" I.P. Thread	

**Air Pistols Meet U.S. Bureau of Labor Standards Sections 50-204.8 and 50-204.10.**

In ordering air pistols, always specify Fig. number and size required.





Model 277

### Model 277 (Patented) Plural Sight Feed Oiler

Glass body with cast brass trimmings. Made with one to fourteen feeds and available with six different size reservoirs.

#### For bearings and journals.

Our Plural Oilers are made with one to fourteen feeds, and in  $\frac{1}{3}$  pint,  $\frac{1}{2}$  pint, pint, quart,  $\frac{1}{2}$  gallon and gallon reservoirs. Each one has a horizontal support stud, and this stud is provided with a lock nut to hold it firmly to the bracket or other support. Each feed has its own sight glass and regulating screw for independent feed adjustment. The snap lever on

top of the oil reservoir starts or stops the flow of oil to all the feeds at once without disturbing the feed adjustments. The oil pipe connections are  $\frac{1}{4}$ " O.D. brass tubing, unless otherwise specified.

All parts are made from brass and the construction throughout is extremely durable. There are no moving working parts to wear out and cause trouble, and with reasonable care this device will outlast the machine it lubricates.

At a slight additional charge our Plural Oilers can be provided with an equalizing tube within the oil reservoir to enable these oilers to deliver the oil at moderate pressures.

Size No.	4	5	6	7	8	9
Capacity	$\frac{1}{3}$ Pint	$\frac{1}{2}$ Pint	Pint	Quart	$\frac{1}{2}$ Gal.	Gallon
Outside diameter of glass	2 $\frac{1}{2}$ "	3"	3 $\frac{1}{2}$ "	4 $\frac{1}{4}$ "	5 $\frac{1}{2}$ "	8 $\frac{1}{4}$ "
Height of glass	2 $\frac{3}{8}$ "	3"	4"	5"	7"	5"

Bodies available in glass, steel or plastic.



Model 377 3 feed

### Model 377 Multiplex Sight Feed Lubricator

Features a solenoid-operated valve for automatic lubrication of bearings and journals.

Made with one to fourteen feeds and available with four different size reservoirs.

The solenoid-operated valves are available for 110, 220, 440 or 550 volts,

25, 30, 40, 50 and 60 cycles and 6, 12, 24, 110, and 220 D.C., plus many other voltages.

Suitable for Class "A" application. Also available with Class "D" explosion proof coil.

In ordering, always specify voltages, frequencies and number of feeds and size. Oil pipe connectors are for  $\frac{1}{4}$ " O.D. tubing unless otherwise specified.

Size No.	6	7	8	9
Capacity	Pint	Quart	$\frac{1}{2}$ Gallon	Gallon
Outside diameter of glass	3 $\frac{1}{2}$ "	4 $\frac{1}{4}$ "	5 $\frac{1}{2}$ "	8 $\frac{1}{4}$ "
Height of glass	4"	5"	7"	5"

Bodies available in glass, steel or plastic.



Fig. 205

### Fig. 205 Oil Syringe "O" Ring Plunger

For oiling bearings or removing oil from base of engines, etc. Made of brass, satin finished. Barrel  $1\frac{1}{4}$ " x 7".



Fig. 405

### Fig. 405 Grease and Oil Gun "O" Ring Plunger

All brass; self-filling, for forcing grease or oil into planetary transmissions, rear axle bevel gears, etc. Made of brass, satin finished. Barrel  $1\frac{1}{2}$ " x 12".



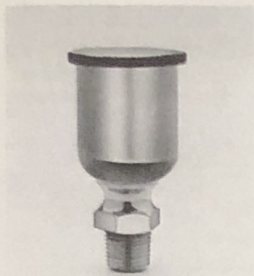


Fig. 9

**Fig. 9 Plain Brass Oil Cups**

Size No.	00	0	1
Outside diameter	5/8"	3/4"	7/8"
Shank pipe thread	1/8"	1/8"	1/8"



Fig. 42

**Fig. 42 Sight Feed Lubricator**

For gas engines, air compressors, blowers, etc.

Bull's eye type (not for steam).

Size No.	0	2	4	5
Diameter of oil chamber	1 1/2"	2"	2 1/2"	3"
Capacity	1 oz.	2 oz.	5 1/2 oz.	8 oz.
Shank pipe thread	3/8"	3/8"	1/2"	1/2"

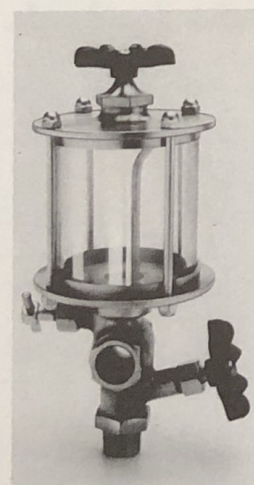


Fig. 60

**Fig. 60 Wolverine Sight Feed Lubricator**

Glass body, cast brass trimmings.  
For gas engines, air compressors, glass bottle machines, etc.

Size No.	3	4	5	6	7
Outside diameter of glass	2 1/4"	2 1/2"	3"	3 1/2"	3 1/2"
Height of glass	2 1/8"	2 3/8"	3"	4"	8"
Capacity	4 oz.	5 oz.	10 oz.	Pint	Quart
Shank pipe thread	3/8"	3/8"	1/2"	1/2"	1/2"



### Marvel Self-Sealing Washers



Washer No.	Hole I.D.	Outside Diameter	Height or Thickness
30	3/8"	13/16"	1/4"
1	1/2"	13/16"	9/32"
21	1/2"	7/8"	3/8"
2	1/2"	7/8"	1/2"
29	1/2"	1"	5/16"
28	1/2"	1"	3/8"
34	1/2"	17/16"	3/8"
19	9/16"	13/16"	9/32"
12	9/16"	27/32"	19/32"
18	9/16"	13/32"	1/2"
3	5/8"	7/8"	9/32"
52	5/8"	7/8"	3/8"
13	5/8"	15/16"	9/32"
9	5/8"	15/16"	9/16"
4	5/8"	1"	9/32"
25	5/8"	1"	15/32"
5	5/8"	1 1/8"	3/8"
37	5/8"	1 1/4"	1/2"
35	5/8"	1 5/16"	13/32"
50	21/32"	1 1/4"	1/4"
20	11/16"	1"	9/32"
51	11/16"	1 1/8"	3/8"
42	11/16"	1 3/16"	7/16"
44	11/16"	1 3/8"	3/8"
56	11/16"	1 7/16"	13/32"
31	3/4"	1"	3/8"
43	3/4"	1"	3/4"
6	3/4"	1 1/16"	9/32"

Washer No.	Hole I.D.	Outside Diameter	Height or Thickness
15	3/4"	1 1/16"	1/2"
47	3/4"	1 1/16"	3/4"
24	3/4"	1 3/32"	13/32"
14	3/4"	1 1/8"	3/8"
39	3/4"	1 1/8"	7/16"
33	3/4"	1 1/8"	1/2"
17	3/4"	1 1/8"	5/8"
54	3/4"	1 1/8"	7/8"
11	3/4"	1 3/16"	13/32"
22	3/4"	1 1/4"	1/4"
7	3/4"	1 1/4"	13/32"
53	3/4"	1 1/4"	1/2"
23	3/4"	1 1/4"	3/4"
8	3/4"	1 5/16"	13/32"
16	3/4"	1 5/16"	5/8"
41	3/4"	1 3/8"	3/8"
32	3/4"	1 3/8"	1/4"
10	3/4"	1 7/16"	13/32"
46	3/4"	1 5/8"	1/2"
45	3/4"	1 5/16"	3/8"
27	7/8"	1 3/8"	13/32"
55	7/8"	1 31/64"	7/8"
40	31/32"	1 3/4"	3/8"
48	31/32"	1 3/4"	7/16"
26	1"	1 5/8"	1/2"
38	1"	1 1/2"	1"
36	1 1/4"	1 7/8"	1 5/16"
49	1 7/8"	2 1/4"	3/4"

**Fig. 100 For Standard Oil Cup Glass**

**Fig. 100 Glass cylinders**

Number	000	0	1	1 1/2	2	3	4	5	6	7	8	9
Outside diameter of glass	1"	1 1/4"	1 1/2"	1 3/4"	2"	2 1/4"	2 1/2"	3"	3 1/2"	4 1/4"	5 1/2"	8 1/4"
Height of glass	7/8"	1 1/8"	1 3/8"	1 5/8"	1 7/8"	2 1/8"	2 3/8"	3"	4"	5"	7"	5"

**Gaskets for oil cup glass  
Neoprene composition**

Number	000	00	0	1	1 1/2	2	3	4	5	6	7	8	9
Outside diameter	1"	1 1/8"	1 1/4"	1 1/2"	1 3/4"	2"	2 1/4"	2 1/2"	3"	3 1/2"	4 1/4"	5 1/2"	8 3/8"
Inside diameter	3/4"	7/8"	1"	1 1/8"	1 1/2"	1 5/8"	1 3/4"	2"	2 1/2"	3"	3 1/2"	4 1/4"	7 1/2"

"Duran" Brand Standard  
"Duran" Brand High Pressure  
"Duran" Brand Red Line  
"Duran" Brand Heavy Wall  
Lubricator Glasses  
Oil Cup Glasses

**#69012  
Glass Tube Cutter  
Now Available**

Boiler gauge glass and liquid level gauge glass is available in 1/2", 5/8" and 3/4" outside diameter by specified lengths.



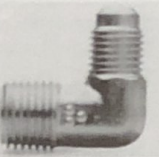





All polycarbonate or plastic plexiglas tubing lengths are cut to the size specified.

We cannot guarantee or be held liable against glass breakage, clouding up or against eating away or any other cause, which is beyond our control.



## Fittings

### 45° S.A.E. Flared Tube Fittings of High Quality Brass

Item	Size	Item	Size
 <b>#62 Flare Nut - Short</b>	<b>Tube Size-Th'd</b> 1/8" - 5/16"-24 3/16" - 3/8"-24 1/4" - 7/16"-20 5/16" - 1/2"-20 3/8" - 5/8"-18 1/2" - 3/4"-16 5/8" - 7/8"-14 3/4" - 1 1/16"-14 7/8" - 1 1/4"-12	 <b>#64 Union with Male Pipe Th'd.</b>	<b>Tube x M.P.T.</b> 1/8" x 1/8" 3/16" x 1/8" 3/16" x 1/4" 1/4" x 1/8" 1/4" x 1/4" 1/4" x 3/8" 5/16" x 1/8" 5/16" x 1/4" 5/16" x 3/8" 3/8" x 1/8" 3/8" x 1/4" 3/8" x 3/8" 3/8" x 1/2" 1/2" x 1/4" 1/2" x 3/8" 1/2" x 1/2" 1/2" x 3/4" 5/8" x 1/2" 3/4" x 1/2" 3/4" x 3/4"
	<b>Tube x M.P.T.</b> 3/16" x 1/8" 1/4" x 1/8" 1/4" x 1/4" 1/4" x 3/8" 5/16" x 1/8" 5/16" x 1/4" 5/16" x 3/8" 3/8" x 1/8" 3/8" x 1/4" 3/8" x 3/8" 3/8" x 1/2" 1/2" x 1/4" 1/2" x 3/8" 1/2" x 1/2" 1/2" x 3/4" 5/8" x 1/2" 3/4" x 1/2" 3/4" x 3/4"		<b>Tube - Both Ends</b> 1/8" 3/16" 1/4" 5/16" 3/8" 1/2" 5/8" 3/4"
 <b>#63 Elbow with Male Pipe Th'd.</b>	<b>Tube x M.P.T.</b> 3/16" x 1/8" 1/4" x 1/8" 1/4" x 1/4" 1/4" x 3/8" 5/16" x 1/8" 5/16" x 1/4" 5/16" x 3/8" 3/8" x 1/8" 3/8" x 1/4" 3/8" x 3/8" 3/8" x 1/2" 1/2" x 1/4" 1/2" x 3/8" 1/2" x 1/2" 1/2" x 3/4" 5/8" x 1/2" 3/4" x 1/2" 3/4" x 3/4"	 <b>#65 Full Union</b>	<b>Tube - Both Ends</b> 1/8" 3/16" 1/4" 5/16" 3/8" 1/2" 5/8" 3/4"
 <b>#300 Connector with Male Pipe Th'd.</b>	<b>Tube x M.P.T.</b> 1/8" x 1/8" 3/16" x 1/8" 3/16" x 1/4" 1/4" x 1/8" 1/4" x 1/4" 1/4" x 3/8" 1/4" x 1/2" 5/16" x 1/8" 5/16" x 1/4" 5/16" x 1/2" 3/8" x 1/8" 3/8" x 1/4" 3/8" x 3/8" 3/8" x 1/2" 1/2" x 1/8" 1/2" x 1/4" 1/2" x 3/8" 1/2" x 1/2" 1/2" x 3/4" 5/8" x 3/8" 5/8" x 1/2" 5/8" x 3/4" 3/4" x 1/2"	 <b>#360 Nut</b>	<b>Tube Size-Th'd.</b> 1/8" - 5/16"-24 3/16" - 3/8"-24 1/4" - 7/16"-24 5/16" - 1/2"-24 3/8" - 9/16"-24 1/2" - 1 1/16"-20 5/8" - 1 3/16"-18 7/8" - 1 1/8"-18
 <b>#401 Elbow with Male Pipe Th'd.</b>	<b>Tube x M.P.T.</b> 1/8" x 1/8" 3/16" x 1/8" 3/16" x 1/4" 1/4" x 1/8" 1/4" x 1/4" 1/4" x 3/8" 5/16" x 1/8" 5/16" x 1/4" 5/16" x 3/8" 5/16" x 1/2" 3/8" x 1/8" 3/8" x 1/4" 3/8" x 3/8" 3/8" x 1/2" 1/2" x 1/4" 1/2" x 3/8" 1/2" x 1/2" 1/2" x 3/4" 5/8" x 3/8" 5/8" x 1/2" 5/8" x 3/4" 3/4" x 1/2"	 <b>#350 Sleeve</b>	<b>Tube Size</b> 1/8" - 7/16" 3/16" - 1/2" 1/4" - 5/8" 5/16" - 3/4" 3/8" - 7/8"

### Compression Fittings of High Quality Brass



Brass Pipe Fittings

Item	Pipe Size	Item	Pipe Size	Item	Pipe Size
	1/8"		1/4"		1/8"
	1/4"		3/8"		1/4"
	3/8"		1/2"		3/8"
			3/4"		1/2"
	1/8"		1/8"		1/8"
	1/4"		1/4"		1/4"
	3/8"		3/8"		3/8"
	1/2"		1/2"		1/2"
	3/4"		3/4"		3/4"
	1 1/2"		1"		1"
	2"				
	2 1/2"				
	1/8" x 1 1/2"		1/8"		1/8" x 1/8"
	1/4" x 1 1/2"		3/8"		3/8" x 1/8"
	3/8" x 1 1/2"		1/2"		1/2" x 1/8"
	1/2" x 1 1/2"		3/4"		3/4" x 1/8"
	1/8" x 2"		1/8"		1/4" x 1/8"
	1/4" x 2"		1/4"		3/8" x 1/4"
	3/8" x 2"		3/8"		
	1/2" x 2"		1/2"		
	3/4" x 2"		1/8"		1/4" x 1/4"
	1/8" x 2 1/2"		1/4"		
	1/4" x 2 1/2"		3/8"		
	3/8" x 2 1/2"		1/2"		
	1/2" x 3"		3/8"		
	3/4" x 3"		1"		
	1/2" x 3"		1 1/2"		
	3/4" x 3"		2"		
	1/8" x 3 1/2"		1/8"		
	1/4" x 3 1/2"		1/4"		
	3/8" x 3 1/2"		3/8"		
	1/2" x 3 1/2"		1/2"		
	3/4" x 3 1/2"		3/4"		
	1/8" x 4"				
	1/4" x 4"				
	3/8" x 4"				
	1/2" x 4"				
	3/4" x 4"				
	1/8" x 4 1/2"				
	1/4" x 4 1/2"				
	3/8" x 4 1/2"				
	1/2" x 4 1/2"				
	3/4" x 4 1/2"				
	1/8" x 5"				
	1/4" x 5"				
	3/8" x 5"				
	1/2" x 5"				
	3/4" x 5"				
	1/8" x 5 1/2"				
	1/4" x 5 1/2"				
	3/8" x 5 1/2"				
	1/2" x 5 1/2"				
	3/4" x 5 1/2"				
	1/8" x 6"				
	1/4" x 6"				
	3/8" x 6"				
	1/2" x 6"				
	3/4" x 6"				



## General Provisions

**All orders are accepted subject to price at time of shipment.**

Terms 1/2 of 1% 10th-25th, Net 30 days -

No invoice will be issued for less than \$20.00 plus transportation.

### Returned Goods

Goods are not to be returned without our permission.

### Export Order

Will be billed at net domestic prices plus packing, handling and documentation. Payment will be made on letter of credit.

### Quantity Discounts

All orders amounting to:

\$ 500.00 or more are subject to a 5% Quantity Discount;

\$1000.00 or more are subject to a 7% Quantity Discount;

\$1500.00 or more are subject to a 10% Quantity Discount.

### How To Order

State Quantity — Model or Figure No. — Size — Material — Brief Description.

### Special Goods

All our devices and other specialties shown in this catalog are of standard construction and we prefer of course, insofar as possible to confine ourselves to the manufacture of standard items. However, we are of an open mind as regards specials, and are already making a large variety of such goods to meet the particular requirements of different customers. If, therefore, you do not find what

you want in our catalog, please do not hesitate to submit blueprint, sketch or sample of the article, and we will gladly figure on same.

**Products not in this catalog could still be available.**

**All Designs Including Prices and Discounts are Subject to Change Without Notice.**

Essex Brass Corp. reserves the right to make changes at any time, without notice, in specifications, model numbers, and design of its products and to discontinue a model when necessary.

## Terms of Sale

**1. Terms:** Net cash 30 days: 1/2% discount for payment as follows: Invoices dated 1st to 15th inclusive if paid on or before the 25th of the month. Invoices dated 16th to the last day of the month inclusive if paid on or before the 10th of the following month.

Cash discount does not apply to transportation charges.

If, in the company's opinion, the financial status of the purchaser at any time does not warrant further production or shipment under the terms of payment specified, the company may require full or partial payment in advance.

If shipments are delayed by purchaser, payments shall become due from date when company is prepared to make shipment, but not before the date originally specified by purchaser.

**2. Prices:** All prices are F.O.B. shipping point. Quantity prices are based on shipping of entire order at one time, at the convenience of the company or as otherwise quoted.

Phone order quoted prices are subject to correction.

**3. Shipments:** The company reserves the right to ship 10% above or below purchase order quantities of non-catalog devices built to customer's specifications, and of all catalog listed devices not normally carried in stock.

**4. Price Changes:** Prices are subject to change without notice and are based upon shipment of the order within 90

days unless otherwise quoted. In case of a price increase, any order specifying delivery later than 30 days after date of order, except when quoted otherwise, will be subject to the increased price prevailing at time of shipment

In the event of a price reduction, material shipped and invoiced will not be subject to participate in the price reduction. Material on order but unshipped at time of price reduction will be invoiced at the lower price.

**5. Minimum Billing:** Orders amounting to less than \$20.00 net will be billed at \$20.00 minimum billing plus transportation.

**6. Acceptance of Orders:** Orders, originally entered, and then "held" for future release, will be subject to the company's terms, conditions and price information as of the date purchaser's release is accepted by the company.

**7. Errors:** All stenographic and clerical errors are subject to correction.

**8. Damage Claims:** Great care is taken in packing our apparatus and the company cannot be held responsible for breakage after having received "in good order" receipts from the transportation company. Our responsibility ceases with delivery to the carrier at which time title passes to the consignee, and all claims for loss, damage and delay must be made to the carrier, but the company will be glad to aid customers in every way to secure a satisfactory adjustment of claims.

**9. Responsibility:** The company is not responsible for damage to apparatus through improper installation or through attempts to operate it above its rated capacity, intentional or otherwise.

**10. Delivery:** Shipping dates are approximate and are dependent upon our prompt receipt of all details essential to the proper execution of the purchaser's order. In case of delay in furnishing complete information, date of shipment may be extended for a reasonable time, based upon conditions at the factory.

**11. Cancellation:** An order once placed with and accepted by the company can be cancelled only with the company's consent and upon terms that will indemnify the company against loss.

**12. Documentation:** Documentation requirements in excess of what would be deemed "normal" will be furnished at a nominal charge.

**13. Guarantee:** THE COMPANY MAKES NO WARRANTY CONCERNING THE UTILITY OR FITNESS OF THE PRODUCTS FOR THE CUSTOMER'S PURPOSES NOR ANY OTHER WARRANTY, EXPRESS OR IMPLIED.

Defective material will be replaced if returned within two (2) months from date of shipment. No claims for loss of profits, loss of labor, consequential damage or other special damage will be allowed. No products are to be returned without our written or authorized permission.

## Material Returned for Credit

**In no case are goods to be returned without first obtaining the company's permission and returned material tag.**

We reserve the right to refuse any material returned for credit if our factory conditions warrant such refusal.

Material accepted for credit is subject

to a minimum service charge of 25% plus all transportation charges paid by the company.

Material built to order is not subject to return for credit under any circumstances.

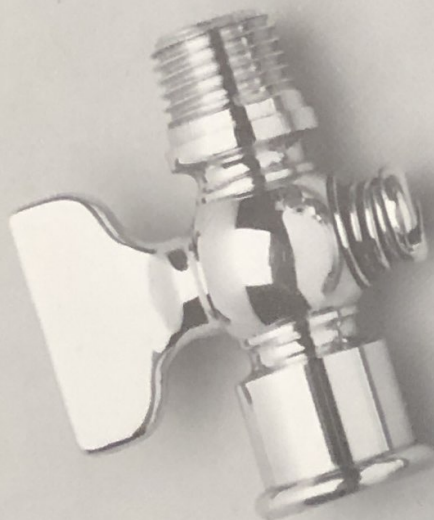
Goods must be securely packed, to reach us without damage. Any cost

incurred by us to put goods in first class condition will be charged to the purchaser.

No credit memorandum will be issued where the net amount involved is less than \$10.00 except to correct errors made by us.

Registered trademarks of the company used in this brochure include: Essex and Essex Brass Corporation. Trademarks of other companies used include: Corning, Hays, Monel, Pyrex, Polycarbonate, Rival and Viton.





*Mailing Address:*

*Post Office Box 629*

*Warren, Michigan 48090-0629*

*Plant Location - Shipping Address*

*23500 Pinewood*

*Warren, Michigan 48091-3198*

*Phone: (586) 757-8200*

*Fax: (586) 757-8257*

*E-mail: [info@essexbrass.com](mailto:info@essexbrass.com)*