

Worm Gear Clamps.....	474-479	Band (cont.)	483-490
Dixon® HS and HSS styles.....	474	Standard jaw clamp tool.....	490
Miniature MH and MAH styles	474	Side jaw clamp tool.....	490
Aero-Seal® style.....	475		
Marine grade	475	Bolted Clamps.....	491-493
Aero-Seal® style liner.....	476	DualHook adjustable ear	491
WaveSeal	476	Double bolt	491
Constant torque	477	With saddles	491
HTM hi torque.....	477	Spiral clamps.....	492
Assorted clamps	478	Clockwise.....	492
Dixon worm gear clamp racks.....	478	Counter clockwise.....	492
Quick release	479		
Make-A-Clamp kits	479		
T-Bolt	480-482		
TBC and STBC style T-bolt	480		
Heavy duty T-bolt.....	481		
Long T-bolt	482		
Band	483-490		
Center punch	483		
Pre-formed F-series.....	483		
Open end FO-series	483		
Universal pre-formed, K-series.....	484		
Pow'r Tight®	484		
Dixon smooth I.D.	485		
Roll-over type.....	485		
Center punch	485		
Band and buckle.....	486		
Clamp buckles	486		
Strapping	486		
Set screw buckles	486		
Banding.....	486		
Band clamp tools	487-488		
Portable locking hand tool.....	487		
Intermediate hand tool.....	487		
Hand tool for 5/8" clamps.....	487		
Hand tool for 3/8" and 5/8" clamps.....	487		
Adapter for F100 tool	487		
Flexible hose clamp driver	487		
Clamp cutter	488		
Clamping tool for band and buckles	488		
Band and buckle clamping tool.....	488		
Clamping tool adapter for 51960 tool	488		
Pinch-on single ear	489		
Pinch-on double ear	489		
Stepless® ear	490		
Clamp service kit.....	490		

Dixon® Worm Gear Clamps

Size

- Screw design: 5/16" slotted hex head

Features

- Four-piece construction
- Maximum recommended torque 50 in. lbs.
- All clamps sold 10 per box

Materials

- Band and housing: SAE 300-series stainless
- Screw: SAE 1018 case-hardened, hex-free chrome zinc-plated steel
- Band and housing: SAE 300-series stainless
- Screw: SAE 300-series stainless

Approval

- Meets SAEJ1508 which supersedes Mil Spec WW-C-440B



style HSS

Band Width	Hose O.D.		Style HS Part #	Master Case Qty	Style HSS Part #	Master Case Qty
	from	to				
1/2"	7/16"	25/32"	HS6	200	HSS6	200
	1/2"	29/32"	HS8	200	HSS8	200
	9/16"	1-1/16"	HS10	500	HSS10	500
	11/16"	1-1/14"	HS12	500	HSS12	500
	13/16"	1-1/2"	HS16	500	HSS16	500
	13/16"	1-3/4"	HS20	500	HSS20	500
	1-1/16"	2"	HS24	500	HSS24	500
	1-5/16"	2-1/4"	HS28	500	HSS28	500
	1-9/16"	2-1/2"	HS32	500	HSS32	500
	1-13/16"	2-3/4"	HS36	500	HSS36	500
	2-1/16"	3"	HS40	200	HSS40	200
	2-5/16"	3-1/4"	HS44	200	HSS44	200
	2-9/16"	3-1/2"	HS48	200	HSS48	200
	2-13/16"	3-3/4"	HS52	200	HSS52	200
	3-1/16"	4"	HS56	200	HSS56	200
9/16"	3-5/16"	4-1/4"	HS60	200	HSS60	200
	3-9/16"	4-1/2"	HS64	200	HSS64	200
	1-7/8"	5"	HS72	100	HSS72	100
	2-1/2"	5-1/2"	HS80	100	HSS80	100
	3-1/8"	6"	HS88	100	HSS88	100
	3-5/8"	6-1/2"	HS96	100	HSS96	100
	4-1/8"	7"	HS104	100	HSS104	100
	5-5/8"	8-1/2"	HS128	100	HSS128	100
	7-1/8"	10"	HS152	100	HSS152	100
	9-3/8"	12-1/4"	HS188	100	HSS188	100
	10-1/8"	13"	HS200	100	HSS200	100
	10-7/8"	13-3/4"	HS212	100	HSS212	100
	11-5/8"	14-1/2"	HS224	100	HSS224	100
	12-3/8"	15-1/4"	HS236	100	HSS236	100
	13-1/8"	16"	HS248	100	HSS248	100
	17-1/8"	20"	HS312	100	HSS312	100

Miniature Worm Gear Clamps

Size

- Screw design: 1/4" slotted hex head

Features

- Maximum recommended torque 15 in. lbs.
- All clamps sold 10 per box

Materials

- Band and housing: SAE 300-series stainless
- Screw: SAE 1018 case-hardened, hex-free chrome zinc-plated steel
- Band and housing: SAE 300-series stainless
- Screw: SAE 300-series stainless

Approval

- Meets SAE J1508



style MH

Band Width	Hose O.D.		Style MH Part #	Master Case Qty	Style MAH Part #	Master Case Qty
	from	to				
5/16"	7/32"	5/8"	MH4	500	MAH4	500
	7/16"	25/32"	MH6	500	MAH6	500
	1/2"	29/32"	MH8	200	MAH8	200
	9/16"	1-1/16"	MH10	200	MAH10	200
	11/16"	1-1/4"	MH12	200	MAH12	200
	15/16"	1-1/2"	MH16	200	MAH16	200
	1-3/16"	1-3/4"	MH20	200	MAH20	200

NOTE: Torque ratings correspond to the torque rating of the screw of the clamp and are not an indication of the working pressure of any hose assembly installed with this clamp



Aero-Seal® Worm Gear Clamps

Features

- Four-piece construction
- Band slots designed for strength and smooth action
- Saddle interlocks into embossed band to form a true concentric circle
- Slotted hex head screw design
- Heat treated screws have buttress thread type
- Safety collar or thumb screw available on the style 200-series only
- Suggested installation torque 30-42 in. lbs.; maximum recommended torque 60 in. lbs.
- All clamps sold 10 per box
- Torque ratings correspond to the torque rating of the screw of the clamp and are not an indication of the working pressure of any hose assembly installed with this clamp

Materials

Style 100

- Band and housing: 300 SS
- Screw: plated carbon steel

Style 200

- Band and housing: 300 SS
- Screw: 410 stainless steel

Style 300

- Band and housing: 300 SS
- Screw: 305 stainless steel



Band Width	Hose O.D.		Style 100 Part #	Style 200 Part #	Style 300 Part #	Pkg Qty
	from	to				
9/16"	7/16"	25/32"	10006	20006	30006	10
	1/2"	29/32"	10008	20008	30008	10
	9/16"	1-1/16"	10010	20010	30010	10
	11/16"	1-1/4"	10012	20012	30012	10
	13/16"	1-1/2"	10016	20016	30016	10
	13/16"	1-3/4"	10020	20020	30020	10
	1-1/16"	2"	10024	20024	30024	10
	1-5/16"	2-1/4"	10028	20028	30028	10
	1-9/16"	2-1/2"	10032	20032	30032	10
	1-13/16"	2-3/4"	10036	20036	30036	10
	2-1/16"	3"	10040	20040	30040	10
	2-5/16"	3-1/4"	10044	20044	30044	10
	2-9/16"	3-1/2"	10048	20048	30048	10
	2-13/16"	3-3/4"	10052	20052	30052	10
	3-1/16"	4"	10056	20056	30056	10
	3-5/16"	4-1/4"	10060	20060	30060	10



style 300

Size

- Screw design: 5/16" slotted hex head

Features

- Three-piece construction
- Suggested installation torque 30-42 in. lbs.; maximum recommended torque 60 in. lbs.
- All clamps sold 10 per box
- Torque ratings correspond to the torque rating of the screw of the clamp and are not an indication of the working pressure of any hose assembly installed with this clamp

Material

- 316 stainless steel marine grade: band, screw, housing

Approval

- Meets SAEJ1508 which supersedes Mil Spec WW-C-440B



Band Width	Hose O.D.		316 Stainless Steel Part #
	from	to	
1/2"	3/8"	7/8"	MGC6
	7/16"	1"	MGC8
	9/16"	1-1/16"	MGC10
	9/16"	1-5/16"	MGC12
	11/16"	1-1/2"	MGC16
	3/4"	1-3/4"	MGC20
	1-1/16"	2"	MGC24
	1-5/16"	2-1/4"	MGC28
	1-9/16"	2-1/2"	MGC32
	1-13/16"	2-3/4"	MGC36
	2-11/16"	3"	MGC40
	2-5/16"	3-1/4"	MGC44
	2-9/16"	3-1/2"	MGC48
	2-13/16"	3-3/4"	MGC52
	3-1/16"	4"	MGC56
	2-1/2"	4-1/2"	MGC64
	3-1/16"	5"	MGC72
	3-1/2"	5-1/2"	MGC80
	4-3/32"	6"	MGC88
	4-1/2"	6-1/2"	MGC96
	5"	7"	MGC104



Aero-Seal® Liner Worm Gear Clamps

Size

- Screw design: 5/16" hex slotted hex head

Features

- The integral extension of the band as a liner (no rivets or welds) protects soft surface hose (silicone and others) from damage caused by extrusion or shearing through the band slots
- All clamps sold 10 per box

Materials

- Band, saddle, housing: stainless steel Style DL
- Screw: plated carbon steel Style DLS
- Screw: 410 stainless steel



style DLS

Band Width	Hose O.D.		Style DL Part #	Pkg Qty	Style DLS Part #	Pkg Qty
	from	to				
1/2"	7/16"	25/32"	DL9206	10	DLS9406	10
	1/2"	29/32"	DL9208	10	DLS9408	10
	9/16"	1-1/16"	DL9210	10	DLS9410	10
	11/16"	1-1/4"	DL9212	10	DLS9412	10
	13/16"	1-1/2"	DL9216	10	DLS9416	10
	13/16"	1-3/4"	DL9220	10	DLS9420	10
	1-1/16"	2"	DL9224	10	DLS9424	10
	1-5/16"	2-1/4"	DL9228	10	DLS9428	10
	1-9/16"	2-1/2"	DL9232	10	DLS9432	10
	1-13/16"	2-3/4"	DL9236	10	DLS9436	10
	2-1/16"	3"	DL9240	10	DLS9440	10
	2-5/16"	3-1/4"	DL9244	10	DLS9444	10
	2-9/16"	3-1/2"	DL9248	10	DLS9448	10

WaveSeal Clamps

Application

- Provides optimal retention in applications involving thermal cycling and / or high vibration

Size

- 5/16" head screw

Features

- Produces a sealing O-ring effect that prevents leakage
- Suggested installation torque 50-70 in. lbs.
- All clamps sold 10 per box
- Torque ratings correspond to the torque rating of the screw of the clamp and are not an indication of the working pressure of any hose assembly installed with this clamp

Materials

- Band: 300 stainless steel
- Liner and housing: 300 stainless steel
- Screw: 410 stainless steel



Band Width	Hose O.D.		Part #	Pkg Qty
	from	to		
9/16"	1-3/32"	1-5/16"	WSS16	10
	1-1/8"	1-1/2"	WSS19	10
	1-1/8"	1-9/16"	WSS20	10
	1-7/16"	1-11/16"	WSS22	10
	1-1/2"	1-13/16"	WSS24	10
	1-3/4"	2-1/16"	WSS28	10
	1-15/16"	2-5/16"	WSS32	10
	2"	2-7/16"	WSS34	10
	2-1/8"	2-9/16"	WSS36	10
	2-5/16"	2-13/16"	WSS40	10
	2-1/2"	3-1/16"	WSS44	10
	2-11/16"	3-5/16"	WSS48	10
	2-7/8"	3-9/16"	WSS52	10
	3-1/16"	3-13/16"	WSS56	10
	3-1/4"	4-1/16"	WSS60	10
	3-7/16"	4-5/16"	WSS64	10
	3-3/4"	4-13/16"	WSS72	10
	4-3/16"	5-5/16"	WSS80	10
	4-1/2"	5-13/16"	WSS88	10

Constant Torque Worm Gear Clamps

Feature

- A patented Belleville spring mechanism permits the clamp to automatically increase or decrease its own diameter due to changes in operational or environmental temperatures

Materials

- Screw: 3/8" hex, carbon steel
- Band: 5/8" wide, 300 stainless steel

Band Width	Hose O.D.		Part #
	from	to	
5/8"	1"	1-3/4"	CT175L
	1-1/4"	2-1/8"	CT200L
	1-3/4"	2-5/8"	CT250L
	2-1/4"	3-1/8"	CT300L
	2-3/4"	3-5/8"	CT350L
	3-1/4"	4-1/8"	CT400L
	3-3/4"	4-5/8"	CT450L
	4-1/4"	5-1/8"	CT500L
	4-3/4"	5-5/8"	CT550L
	5-1/4"	6-1/8"	CT600L
	5-3/4"	6-5/8"	CT650L
	6-1/4"	7-1/8"	CT700L
	6-3/4"	7-5/8"	CT750L
	7-1/4"	8-1/8"	CT800L
	7-3/4"	8-5/8"	CT850L
	8-1/4"	9-1/8"	CT900L
	8-3/4"	9-5/8"	CT950L



HTM Hi Torque Worm Gear Clamps

Features

- Withstands more than three times the SAE torque requirements for worm-driven clamps
- Eight screw threads are engaged in the band simultaneously for incredible torquing drive (over 90 in. lbs.), sealing pressure, and vibration resistance
- Slotted hex head screw design
- Torque ratings correspond to the torque rating of the screw of the clamp and are not an indication of the working pressure of any hose assembly installed with this clamp



Materials

- Band and housing: 300-series half-hard stainless steel¹
- Screw: 410 stainless steel

Band Width	Hose O.D.		Stainless Steel Part #
	from	to	
5/8"	1-1/4"	2-1/8"	HTM200
	1-1/4"	2-5/8"	HP2 ¹
	1-3/4"	2-5/8"	HTM250
	2-1/8"	4-1/8"	HP3 ¹
	2-1/4"	3-1/8"	HTM300
	2-3/4"	3-5/8"	HTM350
	3-1/2"	4-1/8"	HTM400
	3-3/4"	4-5/8"	HTM450
	4"	6-1/8"	HP4 ¹
	4-1/4"	5-1/8"	HTM500
	4-3/4"	5-5/8"	HTM550
	5-1/4"	6-1/8"	HTM600
	5-3/4"	6-5/8"	HTM650
	6-1/8"	9-1/8"	HP5 ¹
	6-1/4"	7-1/8"	HTM700
	6-3/4"	7-5/8"	HTM750
	7-1/4"	8-1/8"	HTM800
	7-3/4"	8-5/8"	HTM850
	8-1/4"	9-1/8"	HTM900



style HTM



style HP

¹ Extended hose O.D. range

Assorted Clamps



Features

- Resealable bag of 10 pieces
- Contains:
 - 2 - Micro-Gear® Size 4
 - 1 - Hy-Gear® Size 6
 - 3 - Hy-Gear Size 12
 - 3 - Hy-Gear Size 20
 - 1 - Hy-Gear Size 36

Approval

- Uniform Plumber Code (UPC), certified (1/2" Hy-Gear clamps)

Hose O.D.		Stainless Steel Part #
from	to	
1/4"	2-3/4"	MGC-10PC

Dixon® Worm Gear Clamp Racks

Size

- Rack with clamps contains (9) clamp sizes with diameter ranges from 7/32" - 2-3/4"

Features

- Sign identifies each clamp size and diameter range
- CRWC, Clamps included are:
 - 30 of part# MH4
 - 30 of part# MH6
 - 20 of part# HS10
 - 20 of part# HS12
 - 20 of part# HS20
 - 20 of part# HS24
 - 20 of part# HS28
 - 20 of part# HS32
 - 20 of part# HS36

Material

- Top load metal rack made of nickel plated steel rods with enameled steel sign

Description	Part #
with 200 clamps	CRWC
without clamps	CR

19-Piece Assortment Pack

Applications

- Applications include plumbing, industrial, marine, hardware, automotive, and household use

Features

- Reusable plastic case for easy identification and organization
- Contains:
 - 5/16" band includes:
 - 6 pcs of 5/16"-5/8" O.D.
 - 4 pcs of 5/16"-7/8" O.D.
 - 2 pcs of 7/16"-1" O.D.
 - 1/2" band includes:
 - 2 pcs of 1/2"-1-1/6" O.D.
 - 2 pcs of 1/2"-1-1/4" O.D.
 - 1 pc of 3/4"-1-3/4" O.D.
 - 1 pc of 1-1/4"-2-1/4" O.D.
 - 1 pc 3/4"- 2-3/4" O.D.

Specifications

- SAE Sizes 4, 6, 8, 10, 12, 20, 28, 36
- Corrosion-resistant with all 300-series stainless steel construction

Description	Part #
19-piece assortment clamp pack	HCVP-19



HCVP-19

Quick-Release Worm Gear Clamps

Size

- Screw design: 5/16" slotted hex head

Features

- Suggested installation torque 25-35 in. lbs., maximum recommended torque 50 in. lbs.
- Parts showing package quantities are sold in package quantities only
- Torque ratings correspond to the torque rating of the screw of the clamp and are not an indication of the working pressure of any hose assembly installed with this clamp



Materials

- Band and housing: 201-series stainless
- Style LS Screw: plated hardened carbon steel
- Style LSS Screw: SAE 410-series stainless

Band Width	Hose O.D.		Style LS Part #	Pkg Qty	Style LSS Part #	Pkg Qty
	from	to				
1/2"	1-1/2"	3-1/2"	LS48	10	LSS48	10
	1"	4"	LS56	10	---	---
	2"	5"	LS72	10	LSS72	10
	2"	6"	LS88	10	LSS88	10
	3-1/2"	6-1/2"	LS96	---	---	---
	2-7/8"	7"	LS104	10	LSS104	10
	1-3/4"	8-1/2"	LS128	---	LSS128	---
	2"	10"	LS152	---	---	---
	2"	12-1/4"	LS188	---	LSS188	---
	10-3/16"	14"	---	---	LSS216	---
	1-3/4"	16"	---	---	LSS248	---
	1-7/8"	20"	---	---	LSS312	---



style LS



style LSS

J

Worm Gear Make-A-Clamp Kits

Application

- A maintenance clamp system in a box; by simply cutting off a piece of banding from a continuous roll, you can make any size stainless steel worm-driven clamp from 2" diameter and up, perfect applications requiring for varying sized large clamps

Sizes

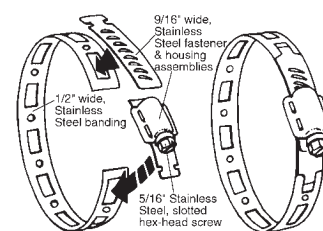
- Band width: 1/2"
- Band thickness: .023"
- Screw design: 5/16" slotted hex head

Feature

- Reusable

Materials

- Band and housing material: 300 stainless
- Screw material: 410 stainless



Contents	Stainless Steel Part #
mini kit: 8-1/2' band, 3 adjustable fasteners, 1 band splice	4000
kit with 100' band, 25 adjustable fasteners, 10 band splices	4001
kit with 50' band, 10 adjustable fasteners, 5 band splices	4002
box with 10 adjustable fasteners: priced per box	4004
box with 100' band, 10 band splices	4005
box with 50' band, 5 band splices	4006
6" demonstrator kit with clamps	4007
box with 10 band splices: priced per box	4008

T-Bolt Clamps

Style TBC

Size

- 3/4" wide, .025" thick,

Features

- Can be applied with a standard 7/16" socket wrench
- Not for use with pneumatic tools



Materials

- Band: 300-series stainless steel
- Bolt: Alloy steel, torque rating: 70 in/lbs.

Style STBC

Size

- 3/4" wide, .025" thick,

Features

- Can be applied with a standard 7/16" socket wrench
- Not for use with pneumatic tools



Materials

- Band: 300-series stainless steel
- Bolt: 300-series stainless steel, torque rating: 50 in/lbs



style TBC



style STBC

Hose O.D.		Style TBC Part #	Hose O.D.		Style STBC Part #	Optional Qty
from	to		from	to		
1.25"	1.406"	TBC131	1.25"	1.4063"	STBC131	25
1.34"	1.56"	TBC150	1.31"	1.56"	STBC150	25
1.56"	1.81"	TBC175	1.44"	1.69"	STBC163	25
1.69"	1.94"	TBC188	1.56"	1.81"	STBC175	25
1.81"	2.06"	TBC200	1.69"	1.94"	STBC188	25
2.06"	2.31"	TBC225	1.81"	2.06"	STBC200	25
2.19"	2.5"	TBC238	1.93"	2.18"	STBC212	25
2.31"	2.62"	TBC250	2.06"	2.31"	STBC225	25
2.31"	2.62"	TBC256	2.19"	2.5"	STBC238	25
2.37"	2.68"	TBC263	2.31"	2.62"	STBC250	25
2.50"	2.81"	TBC275	2.31"	2.62"	STBC256	25
2.63"	2.94"	TBC288	2.37"	2.68"	STBC263	25
2.75"	3.06"	TBC300	2.50"	2.81"	STBC275	25
2.88"	3.19"	TBC312	2.63"	2.94"	STBC288	25
3.00"	3.31"	TBC325	2.75"	3.06"	STBC300	25
3.25"	3.56"	TBC350	2.88"	3.19"	STBC312	25
3.50"	3.81"	TBC375	3.00"	3.31"	STBC325	25
3.56"	3.87"	TBC382	3.25"	3.56"	STBC350	25
3.75"	4.06"	TBC400	3.38"	3.69"	STBC362	25
4.00"	4.30"	TBC425	3.50"	3.81"	STBC375	25
4.25"	4.56"	TBC450	3.56"	3.87"	STBC382	25
4.50"	4.81"	TBC475	3.75"	4.06"	STBC400	25
4.75"	5.06"	TBC500	4.00"	4.30"	STBC425	25
5.00"	5.31"	TBC525	4.25"	4.56"	STBC450	25
5.25"	5.56"	TBC550	4.50"	4.81"	STBC475	25
5.50"	5.81"	TBC575	4.75"	5.06"	STBC500	25
5.75"	6.06"	TBC600	5.00"	5.31"	STBC525	25
6.00"	6.31"	TBC625	5.25"	5.56"	STBC550	25
6.25"	6.56"	TBC650	5.50"	5.81"	STBC575	25
6.50"	6.81"	TBC675	5.75"	6.06"	STBC600	25
6.75"	7.06"	TBC700	6.00"	6.31"	STBC625	25
7.25"	7.56"	TBC750	6.25"	6.56"	STBC650	25
			6.50"	6.81"	STBC675	25
			6.75"	7.06"	STBC700	25
			7.00"	7.31"	STBC725	25
			7.25"	7.56"	STBC750	25
			7.75"	8.06"	STBC800	25
			8.00"	8.31"	STBC825	25
			8.25"	8.56"	STBC850	25
			8.63"	8.94"	STBC888	25
			8.75"	9.06"	STBC900	25
			9.25"	9.56"	STBC950	25
			9.75"	10.06"	STBC1000	10
			10.63"	10.94"	STBC1088	10
			11.75"	12.06"	STBC1200	10
			12.63"	12.94"	STBC1288	10

Heavy Duty T-Bolt Clamps

Size

- 7/8" wide, .040" thick

Features

- Can be applied with a standard 1/2" socket wrench
- Not for use with pneumatic tools



Materials

- Band: 300-series stainless steel
- Style HTBC carbon steel bolt, torque rating: 150 in/lbs
- Style HSTBC 300-series stainless steel bolt, torque rating: 150 in/lbs.

Hose O.D.		Style HTBC Part #	Style HSTBC Part #
from	to		
2.125"	2.4375"	HTBC238	HSTBC238
2.250"	2.5625"	HTBC250	HSTBC250
2.750"	3.0625"	HTBC300	HSTBC300
3.250"	3.5625"	HTBC350	HSTBC350
3.750"	4.0625"	HTBC400	HSTBC400
4.250"	4.5625"	HTBC450	HSTBC450
4.750"	5.0625"	HTBC500	HSTBC500
5.250"	5.5625"	HTBC550	HSTBC550
5.750"	6.0625"	HTBC600	HSTBC600
6.250"	6.5625"	HTBC650	HSTBC650
6.750"	7.0625"	HTBC700	HSTBC700
7.250"	7.5625"	HTBC750	HSTBC750
7.750"	8.0625"	HTBC800	HSTBC800
8.266"	8.562"	---	HSTBC850
8.646"	8.942"	---	HSTBC888
8.766"	9.062"	---	HSTBC900
9.266"	9.562"	---	HSTBC950
9.766"	10.062"	---	HSTBC1000
10.646"	10.942"	---	HSTBC1088
12.646"	12.942"	---	HSTBC1288



style HTBC



style HSTBC

J

Long Bolt T-Bolt Clamps

Size

- 3/4" wide, .025" thick

Features

- Can be applied with a standard 7/16" socket wrench.
- Not for use with pneumatic tools



Materials

- Band: 300-series stainless steel
- Bolt: 300-series stainless steel, torque rating: 50 in/lbs.



Hose O.D.		300-Series Stainless Steel Part #	Optional Qty
from	to		
2.80"	3.37"	STBC325L	25
3.05"	3.62"	STBC350L	25
3.37"	3.94"	STBC382L	25
3.55"	4.12"	STBC400L	25
3.75"	4.32"	STBC420L ¹	25
3.87"	4.44"	STBC432L	25
4.05"	4.62"	STBC450L	25
4.37"	4.94"	STBC482L	25
4.55"	5.12"	STBC500L	25
4.87"	5.44"	STBC532L	25
5.05"	5.62"	STBC550L	25
5.37"	5.94"	STBC582L	25
5.55"	6.12"	STBC600L ¹	25
5.87"	6.44"	STBC632L	25
6.05"	6.62"	STBC650L	25
6.30"	6.87"	STBC675L	25
6.53"	7.10"	STBC698L	25
6.55"	7.12"	STBC700L ¹	25
6.62"	7.19"	STBC707L	25
8.05"	8.62"	STBC850L	25
8.30"	8.87"	STBC875L	25
8.43"	9.00"	STBC888L	25
8.62"	9.19"	STBC907L	25
10.25"	10.82"	STBC1070L	25
10.43"	11.00"	STBC1088L	25
10.62"	11.19"	STBC1107L ¹	25
10.72"	11.29"	STBC1117L	25
12.20"	12.77"	STBC1265L	25
12.43"	13.00"	STBC1288L	25
12.75"	13.32"	STBC1320L	25
14.20"	14.77"	STBC1465L	25
14.43"	15.00"	STBC1488L	25
14.75"	15.32"	STBC1520L	25
16.20"	16.77"	STBC1665L	25
16.43"	17.00"	STBC1688L	25

¹ Stock quantities only

Center Punch Band Clamps

Features

- Install with center punch tools F1, F38, F40, and F100 located on page 487 other manufacturers' punch style tools may also be used
- Sold in package quantities only

Material

- On stainless clamps, bands are 300-series stainless steel, buckles are 302-series stainless steel

Pre-formed F-Series

Band Width	Clamp I.D.	Band THK	Stainless Steel Part #	Pkg Qty	Band THK	Galvanized Steel Part #	Pkg Qty
3/8"	13/16"	.020"	FS3	100	.025"	F3	100
	1-3/8"	.020"	FS311	100	.025"	F311	100
5/8"	1"	.022"	FS4	100	.025"	F4	100
	1-1/4"	.022"	FS5	100	.025"	F5	100
	1-1/2"	.022"	FS6	100	.031"	F6	100
	1-3/4"	.022"	FS7	100	.031"	F7	100
	2"	.022"	FS8	100	.031"	F8	100
	2-1/4"	.022"	FS9	100	.031"	F9	100
	2-1/2"	.022"	FS10	50	.031"	F10	50
	2-3/4"	.022"	FS11	50	.031"	F11	50
	3"	.022"	FS12	50	.031"	F12	50
	3-1/2"	.022"	FS14	50	.031"	F14	50
	4"	.022"	FS16	25	.031"	F16	25
	4-1/2"	.022"	FS18	25	.031"	F18	25
	5"	.022"	FS20	25	.031"	F20	25
	6"	.022"	FS24	25	.031"	F24	25
	7"	.022"	FS28	25	.031"	F28	25
	8"	.022"	FS32	25	.031"	F32	25



J

Open End FO-Series

Band Width	Clamp I.D.	Band THK	Stainless Steel Part #	Pkg Qty	Band THK	Galvanized Steel Part #	Pkg Qty
3/8"	13/16"	.020"	FOS3	100	.025"	FO3	100
	1-3/8"	.020"	FOS311	100	.025"	FO311	100
	2"	.020"	FOS316	100	.025"	FO316	100
	3-1/8"	.020"	FOS325	100	.025"	FO325	100
5/8"	2"	.022"	FOS8	100	.025"	FO8	100
	2-1/2"	.022"	FOS10	50	.025"	FO10	50
	3"	.022"	FOS12	50	.031"	FO12	50
	3-1/2"	.022"	FOS14	50	.031"	FO14	50
	4"	.022"	FOS16	50	.031"	FO16	50
	4-1/2"	.022"	FOS18	50	.031"	FO18	50
	5"	.022"	FOS20	25	.031"	FO20	25
	6"	.022"	FOS24	25	.031"	FO24	25
	7"	.022"	FOS28	25	.031"	FO28	25
	8"	.022"	FOS32	25	.031"	FO32	25
	9"	.022"	---	---	.031"	FO36	25
	10"	.022"	---	---	.031"	FO40	25
	12"	.022"	---	---	.031"	FO48	25
	14"	.022"	---	---	.031"	FO56	10



Universal Pre-formed K-Series

Features

- Can be center punched or rolled over; install with the center punch or roll over tools located on page 487
- Fast-Lok™ tools: F1, F40, F100, page 487
- Super Strap Tools: 51960 screw action with 51970 adapter page 488
- Bandit®: S100 air tool with S180 Jr. head, C-001 hand tool with J001 Jr. adapter, S350 air tool with S260 Jr. head, T-240 for 3/8" only or T-250 for 3/8" and 5/8", S-38 for 3/8" and 5/8", J-102 Pok-It™ for 3/8" only
- Punch-Lok® tools: P-1000 for 3/8" and 5/8", P-3000 for 3/8" only, P-38 for 3/8" and 5/8"
- Sold in package quantities only

Materials

- On stainless clamps, bands are 300-series stainless steel, buckles are 302-series stainless steel



Band Width	Clamp I.D.	Band THK	Stainless Steel Part #	Pkg Qty	Band THK	Galvanized Steel Part #	Pkg Qty
3/8"	13/16"	.025"	KS3	100	.025"	K3	100
	1-3/8"	.025"	KS311	100	.025"	K311	100
	1"	.030"	KS4	100	.031"	K4	100
	1-1/4"	.030"	KS5	100	.031"	K5	100
	1-1/2"	.030"	KS6	100	.031"	K6	100
	1-3/4"	.030"	KS7	100	.031"	K7	100
	2"	.030"	KS8	100	.031"	K8	100
5/8"	2-1/4"	.030"	KS9	100	.031"	K9	100
	2-1/2"	.030"	KS10	50	.031"	K10	50
	2-3/4"	.030"	KS11	50	.031"	K11	50
	3"	.030"	KS12	50	.031"	K12	50
	3-1/2"	.030"	KS14	50	.031"	K14	50
	4"	.030"	KS16	25	.031"	K16	25
	4-1/2"	.030"	KS18	25	.031"	K18	25
	5"	.030"	KS20	25	.031"	K20	25
	6"	.030"	KS24	25	.031"	K24	25
	7"	.030"	KS28	25	.031"	K28	25
	8"	.030"	KS32	25	.031"	K32	25

Pow'r Tight® Clamps

Application

- Ideal for thick-walled and higher durometer hose
- Industries these clamps typically used in are agriculture, oil, gas, mining, construction, chemical processing, refining, and municipalities
- Band-It's Ultra-Lok Tools Part# UL4000D and UL9000D

Size

- I.D. - 2" to 9"

Features

- Heavy-duty buckle and double wrapped to provide optimal holding power
- Smooth seal design for gap-free contact
- 3/4" band width
- 0.030" band thickness

Material

- 201 1/4 hard stainless steel for exceptional band strength



Size I.D.	Part #
2"	PHDS200
2-3/4"	PHDS275
3"	PHDS300
3-3/4"	PHDS375
4"	PHDS400
4-1/2"	PHDS450
5"	PHDS500
6"	PHDS600
6-1/2"	PHDS650
7"	PHDS700
8"	PHDS800
9"	PHDS900

Dixon® Smooth I.D. - Roll Over Type Clamps

Application

- For use with industrial hose made of stiffer, thinner thermoplastics

Features

- Provide a uniform, gap-free inside diameter and strong holding power
- Install with roll over type clamp tools and most common band clamp tools such as the 51960 and 51970 band tools on page 488
- Sold in package quantities only

Band Width	Clamp I.D.	Band THK	201 Stainless Steel Part #	Pkg Qty	Galvanized Steel Part #	Pkg Qty
3/8"	13/16"	.025"	JS201	100	JS301	100
	1"	.025"	JS243	100	JS343	100
	1-3/8"	.025"	JS202	100	JS302	100
	2"	.025"	JS245	100	---	---
1/2"	1"	.030"	JS203	100	JS303	100
	1-1/4"	.030"	JS204	100	JS304	100
	2-3/4"	.030"	JS230	100	JS330 ¹	100
5/8"	1-1/2"	.030"	JS205	100	JS305	100
	1-3/4"	.030"	JS206	100	JS306	100
	2"	.030"	JS207	100	JS307	100
	2-1/4"	.030"	JS208	100	JS308	100
	2-1/2"	.030"	JS209	100	JS309	100
	2-3/4"	.030"	JS210	50	---	---
3/4"	3"	.030"	JS211	50	JS311	50
	3-1/2"	.030"	JS212	50	JS312	50
	4"	.030"	JS213	25	JS313	25
	4-1/2"	.030"	JS214	25	JS314	25
	5"	.030"	JS215	25	JS315	25
	6"	.030"	JS216	25	---	---
	7"	.030"	JS218	25	---	---

¹ Stock quantities only



J

Dixon Smooth I.D. Center Punch Clamps

Application

- For use in applications where conditions are highly corrosive

Features

- Double wrapped and locked with the conical punch of the F100 tool page 487
- Unique dimple design offers excellent sealing strength while maintaining radial compression
- Heavy buckle provides optimal holding power
- Ideal for thin wall hose
- Low profile
- Sold in package quantities only

Band Width	Clamp I.D.	Band THK	201 Stainless Steel Part #	Pkg Qty
5/8"	1"	.025"	HBC4S	100
	1-1/4"	.025"	HBC5S	100
	1-1/2"	.025"	HBC6S	100
	1-3/4"	.025"	HBC7S	100
	2"	.025"	HBC8S	100
	2-1/4"	.025"	HBC9S	100
	2-1/2"	.025"	HBC10S	50
	2-3/4"	.025"	HBC11S	50
	3"	.025"	HBC12S	50
	3-1/2"	.025"	HBC14S	50
	4"	.025"	HBC16S	25
	4-1/2"	.025"	HBC18S	25
	5"	.025"	HBC20S	25
	6"	.025"	HBC24S	25
	7"	.025"	HBC28S	25
	8"	.025"	HBC32S	25



Band & Buckles System

Features

- Install with 51960 band clamp tool
- Sold in box quantities only



Band Width	201 Stainless Steel Part #	Pkg Qty
3/8"	CS375	100
1/2"	CS500	100
5/8"	CS625	100
3/4"	CS750	100

Strapping

Feature

- Install with 51960 band clamp tool



Band Width	Band Thickness	Length	201 Stainless Steel Part #	Galvanized Steel Part #
3/8"	.025"	100'	SS375	SG375
1/2"	.031"	100'	SS500	SG500
5/8"	.031"	100'	SS625	SG625
3/4"	.031"	100'	SS750	SG750

Set Screw Buckles

Application

- Used in applications when a temporary clamp is desired or space limitations do not allow for tool roll-over



Features

- Set screw locks band after tensioning
- Sold in box quantities only

Band Width	201 Stainless Steel Part #	Pkg Qty
1/2"	SSB500	25
3/4"	SSB750 ¹	25

¹ 3/4" buckle may be used with 5/8" band

Stainless Steel Banding with Tote

Features

- Resistant to moisture
- Built-in handle
- Full view of available band
- Easy to dispense and recoil



Band Width	Band Thickness	Length	Package Description	201 Stainless Steel Part #
1/2"	.030"	100'	plastic blue tote	ST204B
5/8"	.030"	100'	plastic green tote	ST205G
3/4"	.030"	100'	plastic red tote	ST206R

Band Clamp Hand Tools

Locking Hand Tool

Applications

- For application of punch type 3/8" and 5/8" band clamps
- For use with F-series only

Part #
F38



Intermediate Hand Tool

Application

- For application of 3/8" and 5/8" band clamps

Part #
F40



Hand Tool for 5/8" Clamps

Application

- For application of 5/8" band clamps

Feature

- Imported

Part #
F1



Hand Tool for 3/8" & 5/8" Clamps

Application

- For application of 3/8" and 5/8" band clamps

Feature

- Made in the USA

Part #
F100

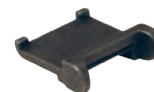


Adapter for F100 Tool

Application

- 3/8" clamp adapter for F100 tool only

Part #
F229



Flexible Hose Clamp Driver

Applications

- Flexible shaft and no-slip grip provide 90° access and work best in hard-to-reach places such as compact car and boat engines, as well as plumbing repair applications

Features

- Socket fits mini and standard hose clamp screw heads
- Flip the socket for the desired size of 1/4" or 5/16"

Socket Size	Part #
1/4" or 5/16"	FHCD





Clamp Cutter

Part #
F550

Band & Buckle Clamping Tools



Description	Part #
Clamping tool for band and buckles	51960



Application

- For 51960 tool above

Description	Part #
adapter for 51960 tool to install preformed clamps	51970

Pinch-On Clamps

Single Ear

Sizes

- Band width: .275"
- Band thickness: .030"

Feature

- Sold in package quantities only

Nominal Size	Range		Zinc Plated Steel Part #	304 Stainless Steel Part #	Pkg Qty
	closed	open			
3/8"	.350"	.413"	105	105R	100
7/16"	.382"	.445"	113	113R	100
15/32"	.409"	.484"	123	123R	100
1/2"	.449"	.524"	133	133R	100
35/64"	.469"	.551"	140	140R	100
9/16"	.496"	.571"	145	145R	100
5/8"	.543"	.618"	157	157R	100
11/16"	.595"	.669"	170	170R	100
23/32"	.618"	.728"	185	185R	100
3/4"	.669"	.780"	198	198R	100
13/16"	.717"	.827"	210	210R	100
7/8"	.780"	.890"	226	226R	100
15/16"	.839"	.949"	241	241R	100
1"	.898"	1.008"	256	256R	100
1-1/16"	.945"	1.067"	271	271R	100
1-1/8"	1.004"	1.126"	286	286R	100
1-3/16"	1.063"	1.185"	301	301R	100
1-5/16"	1.181"	1.303"	331	331R	100
1-3/8"	1.240"	1.362"	346	346R	100
1-15/32"	1.358"	1.480"	376	376R	100
1-9/16"	1.437"	1.559"	396	396R	100
1-5/8"	1.492"	1.614"	410	410R	100
1-11/16"	1.551"	1.673"	425	425R	100
1-23/32"	1.610"	1.732"	440	440R	100
1-3/4"	1.669"	1.791"	455	455R	100
1-13/16"	1.728"	1.850"	470	470R	100
1-7/8"	1.787"	1.909"	485	485R	100
1-15/16"	1.847"	1.969"	500	500R	100
2"	1.906"	2.028"	515	515R	100



J

Double Ear**Features**

- When ordering double ear clamps, select nominal clamp size nearest to, but always larger than, the O.D. of material to be clamped after insert has been fitted
- Sold in package quantities only

Nominal Size	Range		Band Width	Zinc Plated Steel Part #	304 Stainless Steel Part #	Pkg Qty
	closed	open				
3/16"	.134"	.197"	.197"	0305	0305R	100
1/4"	.197"	.276"	.236"	0507	0507R	100
5/16"	.276"	.354"	.275"	0709	0709R	100
3/8"	.319"	.433"	.275"	0811	0811R	100
1/2"	.425"	.512"	.275"	1113	1113R	100
9/16"	.492"	.591"	.295"	1315	1315R	100
19/32"	.551"	.669"	.315"	1517	1517R	100
5/8"	.591"	.709"	.315"	1518	1518R	100
3/4"	.638"	.787"	.335"	1720	1720R	100
13/16"	.709"	.866"	.354"	1922	1922R	100
7/8"	.748"	.906"	.354"	2023	2023R	100
15/16"	.827"	.984"	.394"	2225	2225R	100
1"	.886"	1.063"	.394"	2327	2327R	100
1-1/8"	1.035"	1.221"	.394"	2731	2731R	100
1-7/16"	1.260"	1.457"	.394"	3437	3437R	100
1-1/2"	1.378"	1.575"	.394"	3740	3740R	100



Oetiker Stepless® Ear Clamps

Features

- Once installed and clamped, tampering is easily visible
- Clamps are not reusable; they should not be pried open, doing so renders the clamp nonfunctional
- Ensured clamping seal
- For low durometer or thin-walled hose/tubing
- For silicon, vinyl, polyurethane, or other high-tech materials
- Smooth inner band prevents damage to the hose while the tongue-in-groove design provides a 360° seal
- No steps or gaps inside the clamp
- Install clamps using 1098 or 1099 clamp tools below
- Clamps hold against pressure, vibration, and material shrinkage due to temperature changes or aging
- Built-in spring action permits the clamp to breathe without loosening
- When ordering, select the nominal size nearest to, but always larger than, the outside diameter of the material to be clamped, the outside diameter should be determined with connection fully assembled
- Sold in package quantities only



Nominal Size	Range (inches)		304 Stainless Steel Part #	Pkg Qty
	closed	open		
9/32"	.228"	.275"	0983	100
3/8"	.307"	.374"	0986	100
7/16"	.378"	.445"	0989	100
1/2"	.425"	.524"	0993	100
35/64"	.453"	.551"	0997	100
9/16"	.472"	.571"	0999	100
5/8"	.520"	.618"	1005	100
11/16"	.571"	.669"	1009	100
3/4"	.654"	.779"	1021	100
13/16"	.701"	.827"	1029	100

Clamp Service Kit

Includes

- 15 of part #0709
- 15 of part #0811
- 15 of part #1113
- 15 of part #1315
- 15 of part #1518
- 12 of part #1720
- 12 of part #2023
- 12 of part #2225
- 12 of part #2327
- 1 pair of standard jaw pincers, part # 1098



Part #

SK1098

Standard Jaw Clamp Tool

Part #

1098



Side Jaw Clamp Tool

Part #

1099





DualHook Adjustable Ear Clamps

Applications

- Recommended for CVJ aftermarket for TPE and rubber boot applications
- Designed to use with applications where high performance and universal features are demanded

Features

- Tongue-in-groove design: provides Stepless® feature for the whole adjustable range and a smooth sliding into the recess
- Optimized interlock design: three dual hooks provide extra high force
- Waved band edge with dimples: enhances band strength and avoids the risk of breakage
- The recommended maximum closing force is 3800 N

Material

- Stainless steel, material no. 1.4301 / UNS S30400

304 Stainless Steel	
Size	Part #
24.5 mm	0260R
25.9mm	0261R
29.0mm	0262R
32.1mm	0263R
38.7mm	0264R
48.7mm	0265R
67.3mm	0266R
67.3mm	0267R



Double Bolt Clamps

Features

- Inner surface has dual gripping ridges
- Bolt lugs are reinforced to prevent bending out of alignment
- Torque values for clamps are based on dry bolts
- The use of lubricant on bolts will adversely effect clamp performance
- Measure hose O.D. accurately before ordering clamps
- Consult Dixon® when using double bolt clamps on helical wire hose



Hose O.D.		Plated Iron Part #	Torque in ft. lbs.	Optional Qty
from	to			
1-8/64"	1-12/64"	J48	15	100
1-12/64"	1-24/64"	J49	21	50
1-28/64"	1-34/64"	JX49	21	25
1-40/64"	1-52/64"	DL14	40	25
1-48/64"	2-3/64"	DL20	27	25
2-7/64"	2-19/64"	DL24 ¹	27	25
2-20/64"	2-40/64"	DL32 ¹	40	25
2-32/64"	2-48/64"	DL275	40	25
2-48/64"	3-4/64"	DL306	60	20
3-4/64"	3-24/64"	DL328	60	20
3-16/64"	3-32/64"	DL350	60	20

¹ Investment cast carbon steel



Double Bolt Clamps with Saddles

Hose O.D.		Plated Iron Part #	Torque in ft. lbs.	Optional Qty
from	to			
3-32/64"	3-52/64"	400	40	25
3-50/64"	4-4/64"	431	40	20
4-2/64"	4-18/64"	463	40	20
4-16/64"	4-60/64"	525	60	10
4-32/64"	5-16/64"	550	60	10
5-8/64"	5-44/64"	600	60	10
5-44/64"	5-60/64"	639	60	10
5-60/64"	6-32/64"	675	60	10
6-32/64"	7-36/64"	769	60	10
7-44/64"	8-12/64"	818	125	5
8-16/64"	8-56/64"	875	125	5
8-60/64"	9-56/64"	988	125	5
9-60/64"	11-24/64"	1125	125	5
11-12/64"	13"	1275	125	3
12-12/64"	14"	1360	200	2
13-12/64"	15"	1450	200	2
15-4/64"	17-32/64"	1700	260	2



Spiral Clamps

Application

- For use on convoluted cover hose

Features

- More than one clamp may be needed per size; contact the hose manufacturer for more information
- Due to fluctuations in the O.D. of hose each individual installation should be checked
- To determine which style clamp is needed for your hose look at the end of the hose; if the helix spirals in a clockwise direction away from you (along the hose), a clockwise clamp is needed. If the helix spirals in a counterclockwise direction away from you, a counterclockwise clamp is needed. Examples include, but are not limited to: Kuriyama convoluted hose uses counter clockwise clamps; Pacific Echo and Kana Flex use clockwise clamps; Goodyear uses both counter clockwise and clockwise.



Clockwise

Size	Hose O.D.		Plated Steel, Right Hand Part #
	from	to	
1-1/2"	1-34/64"	1-52/64"	SC150
2"	2-18/64"	2-32/64"	SC200
2-1/2"	2-46/64"	3-8/64"	SC250
3"	3"	3-32/64"	SC300
4"	4"	4-32/64"	SC400
5"	5-6/64"	5-32/64"	SC500
6"	6-16/64"	7"	SC600
8"	8-32/64"	9-16/64"	SC800
10"	10-40/64"	11-16/64"	SC1000
12"	11-52/64"	12-61/64"	SC1200



Counter Clockwise

Size	Hose O.D.		Plated Steel, Left Hand Part #
	from	to	
1-1/2"	1-34/64"	1-52/64"	SCCW150
2"	2-18/64"	2-32/64"	SCCW200
2-1/2"	2-46/64"	3-8/64"	SCCW250
3"	3"	3-32/64"	SCCW300
4"	4"	4-32/64"	SCCW400
5"	5-6/64"	5-32/64"	SCCW500
6"	6-16/64"	7"	SCCW600
8"	8-32/64"	9-16/64"	SCCW800
10"	10-40/64"	11-16/64"	SCCW1000
12"	11-52/64"	12-61/64"	SCCW1200

