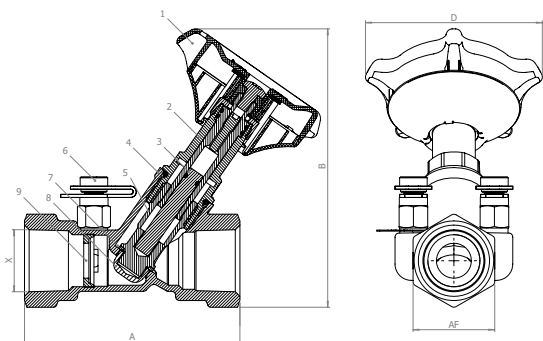


### 58A SERIES BALANCING VALVE



Apollo 58A Series Balance Valves are precision engineered and manufactured valves which provide two position hydronic circuit isolation capability and multi-turn throttling adjustment as required for proportional balancing of hydronic systems. The unique integrated digital readout in the handle allows qualified technicians to easily adjust the valve to achieve a highly accurate flow. Valve pressure drop can be read through the valves integrated 1/4" measurement ports, and flow calculated from the flow coefficient associated with the numerical setting. The integrated fixed orifice offers greater accuracy than that of a variable orifice.

#### FEATURES

- Forged DZR Brass
- P/T Plugs
- Compatible with All Flow Meters
- Easy Adjustment and Setpoint Indicator
- Isolated Flow Shut-off
- Non-Rising Stem
- Y Pattern Body
- Positive Shut Off

#### APPROVALS

- WRAS

#### OPTIONS

- NPT Connection
- Solder Connection
- Press Connection†
- PEX A Connection F1960
- PEX B/C Connection F1807

#### PERFORMANCE RATING

- CWP: 300 PSI  
(200 CWP for Push Fittings)
- Temperature Range:  
15°F to 250°F (-10°C to 120°C)

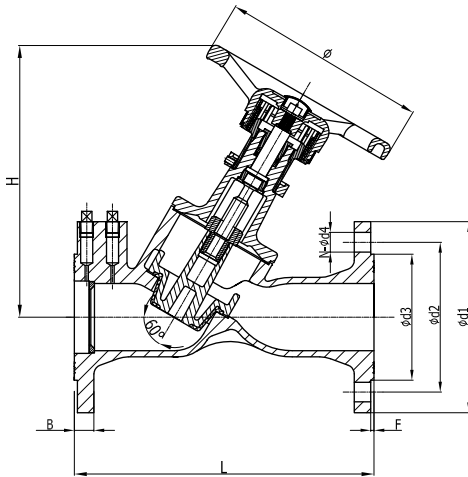
#### DIMENSIONS

PART NUMBER	SIZE	CONNECTION	DIMENSIONS (IN.)				WEIGHT (LB.)
			A	B	D	AF	
58A203T	1/2"	FNPT	3.11	4.22	3.54	1.08	1.17
58A204T	3/4"		3.39	4.15		1.26	1.3
58A205T	1"		4.17	4.45		1.57	1.98
58A206T	1-1/4"		4.88	4.72		1.97	2.84
58A207T	1-1/2"		5.12	4.85		2.17	3.7
58A208T	2"		6.26	5.43		2.76	6.53
58A203S	1/2"	SOLDER	4.35	4.22	3.54	1.08	1.3
58A204S	3/4"		5.03	4.15		1.26	1.54
58A205S	1"		6.85	4.45		1.57	2.32
58A206S	1-1/4"		7.47	4.72		1.97	3.47
58A207S	1-1/2"		8.31	4.85		2.17	4.62
58A208S	2"		10	5.43		2.76	7.88
58A203X	1/2"	PEX B/C	5.06	4.22	3.54	1.08	1.3
58A204X	3/4"		5.76	4.15		1.26	1.54
58A205X	1"		7.01	4.45		1.57	2.32
58A203X2	1/2"	PEX A	5.11	4.22	3.54	1.08	1.3
58A204X2	3/4"		5.81	4.15		1.26	1.54
58A205X2	1"		7.06	4.45		1.57	2.32
58A203PR	1/2"	PRESS	4.98	4.22	3.54	1.08	1.35
58A204PR	3/4"		5.56	4.15		1.26	1.62
58A205PR	1"		6.43	4.45		1.57	2.36
58A206PR	1-1/4"		7.42	4.72		1.97	3.42
58A207PR	1-1/2"		8.38	4.85		2.17	4.6
58A208PR	2"		9.88	5.43		2.76	7.75

#### STANDARD MATERIALS LIST

1	Handle	Glass Filled PA66 (Red)
2	Bonnet	HPb59-3 Brass
3	Seals	EPDM
4	Body	CC7525 Brass (BS EN 1982) - DZR
5	Stem	HPb59-3 Brass
6	Test Points	Brass Body & EPDM Plug
7	Nose	CW602N Brass (BS EN 12164) - DZR
8	Orifice Plate	HPb59-3 Brass

### 58B SERIES BALANCING VALVE



Apollo 58B Series Commercial Double Regulating Valve are intended for the isolation and regulation of sections of pipe work and equipment in HVAC applications and general commercial applications. Valve pressure drop can be read through the valves integrated 1/4" measurement ports, and flow calculated from the flow coefficient associated with the numerical setting on the side of the handle. The valves have non-rising stems that help reduce the amount of space needed. The integrated fixed orifice offers greater accuracy than that of a variable orifice.

#### FEATURES

- Regulating and Isolating Functions
- Flanged End Connection Compatible with ANSI 125# & 150# Flanges
- Rugged Handwheel
- Grooved End Adapters Available

#### PERFORMANCE RATING

- Max Working Pressure: 230 PSI
- Temperature Range: 15°F - 250°F
- Fusion Bonded Epoxy powder coating

#### DIMENSIONS

PART NUMBER	SIZE	DIMENSIONS (IN.)										WEIGHT (LB.)	FLOW RATES	
		L	H	B	Ø	ØD1	ØD2	ØD3	F	N-ØD4			CV	CVS
58B209F	2-1/2"	11.42	10.43	0.69	7.87	7.01	5.5	4.12	0.08	4-Ø 3/4"		38.94	120.23	120.23
58B200F	3"	12.2	10.63	0.75	7.87	7.52	6	5	0.08	4-Ø 3/4"		51.92	129.48	134.11
58B20AF	4"	13.78	12.2	0.94	9.45	9.02	7.5	6.19	0.08	8-Ø 3/4"		66	187.29	246.25
58B20BF	5"	15.75	13.39	0.94	11.42	10	8.5	7.31	0.08	8-Ø 7/8"		99	293.65	384.98
58B20CF	6"	18.9	13.39	1	11.42	10.98	9.5	8.5	0.08	8-Ø 7/8"		114.4	387.29	550.3
58B20EF	8"	23.62	21.14	1.13	13.78	13.5	11.75	10.62	0.08	8-Ø 7/8"		231	618.51	887.88
58B20GF	10"	28.74	22.44	1.19	16.54	15.98	14.25	12.75	0.08	12-Ø 1"		407	1270.55	1332.98
58B20HF	12"	33.46	27.17	1.25	16.54	19.02	17	15	0.08	12-Ø 1"		545.6	1835.89	2015.08

#### STANDARD MATERIALS LIST

<b>BODY</b>	Ductile Iron	<b>STEM</b>	Stainless Steel
<b>BONNET</b>	Ductile Iron	<b>GASKET</b>	Graphite
<b>DISC</b>	Ductile Iron, EPDM Coated	<b>HANDWHEEL</b>	Carbon Steel (2-1/2" - 4") Ductile Iron (5" - 12")
<b>DISC NAIL</b>	Brass		
<b>"O" RING</b>	EPDM		

### 58 SERIES BALANCING VALVE



Provides dependable hydronic control; for use with 1/2" and 3/4" copper piping. Pressure rated to 150 psig.

#### FEATURES

- ASTM B584 Bronze
- EPDM O-Ring Seal
- Screw Slot Flow Adjustment
- Proudly Made in USA

PART NUMBER	SIZE (IN.)	CV	WT. (LB.)
58-003-01	1/2 Solder	4	.30
58-004-01	3/4 Solder	14	.5